



SOBHA ONE

SOBHA
REALTY



ONE

THE JOURNEY BEGINS

ONE that brings you
closer to nature



ONE
THAT INSPIRES AND AWES

A place where you can take
one day at a time



ONE

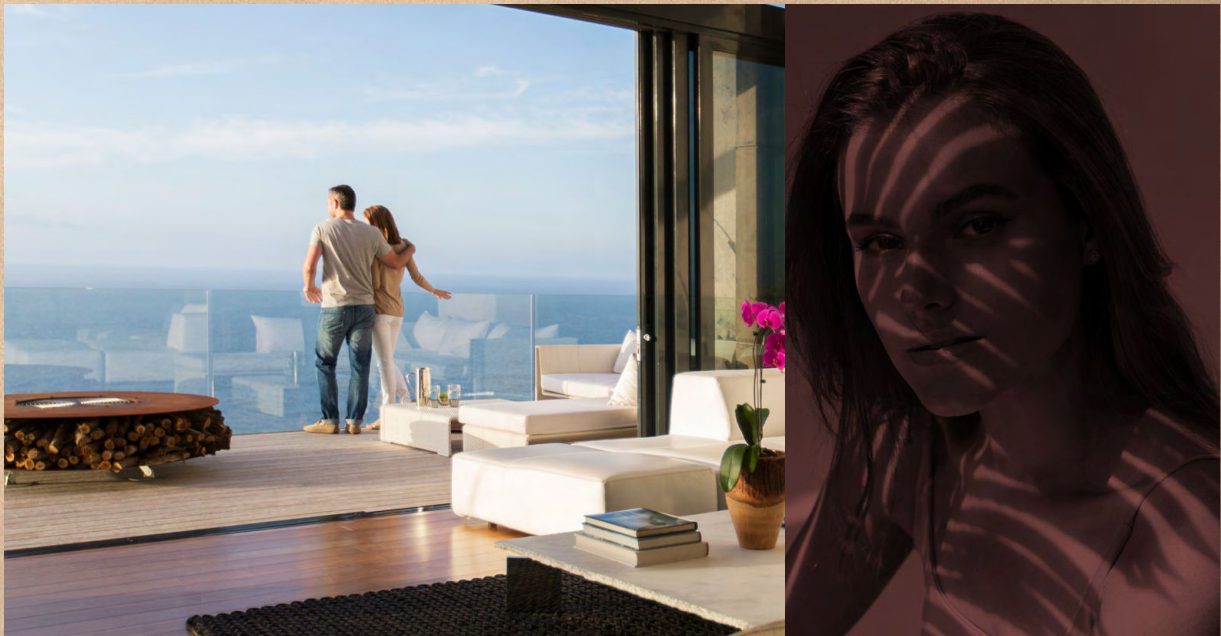
BE ONESELF

It's one of a kind, like you



One where the world is
close yet far away

THE POWER OF ONE



*When imagination and vision
come together Life meets style.*

City and nature hum together,
Work & play find a balance and become One



ONE WAY: YOUR WAY

The best places are hidden in plain sight

Near the vital Ras Al Khor Road, Sobha One is a little world tucked away. Look to the north at the calming waters of the Creek as they look back. Further north in the skyline with panoramic views of The Burj Khalifa, Creek Tower to the Northeast and Downtown to the West.



ARRIVE & DEPART WITH GRACE

Sobha One is right near two new interchanges on Ras Al Khor Road. So, getting home has never been faster. With exits in both the West and East, a new planned metro line behind Sobha One, soar where you need to be on your terms.

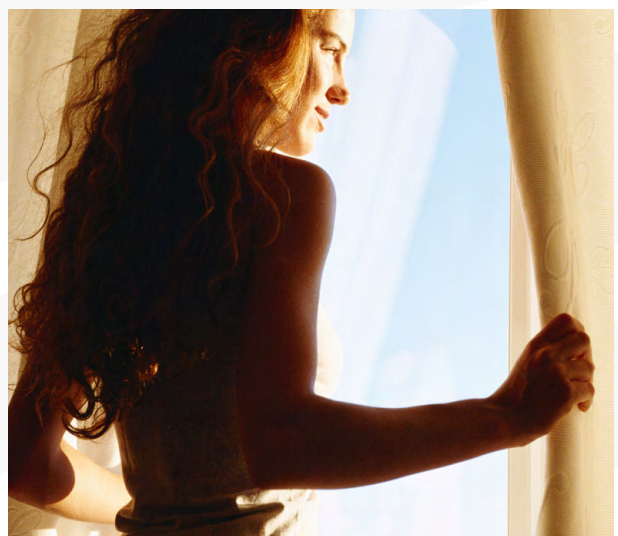




LIVING BY THE WATER

Imagine waking up each morning next to serene water. The sun glints off the water, casting a sparkling path across the ripples. A light breeze blows, rustling the leaves of the nearby trees.

It's yours to stroll down the pathway or sit peacefully watching the calm waters. Go on, spend lazy weekends lounging near the water, reading, and soaking up the sun.



ONE POINT OF VIEW: YOURS

With a canvas spread over 1.5 million square feet, its breathtaking views as far as your eye can see. Look around to views of Golf Course, calm water, iconic Burj Khalifa & Downtown. Every glance sets a different mood.



ONE

SPACE

Sobha One spreads its tapestry over five interlinked towers. Rising from 30 stories tall and hitting a crescendo of 65 stories, it's one note after another that sings in chorus with the skyline

With 1 to 4 bedroom apartments & 2 to 4 bedroom Duplex, it's a world of its own.



ONE FOR ALL ALL FOR ONE



*Life is too short to settle for anything less than
the best. At Sobha One, luxury living is a
natural choice.*

TEE OFF IN STYLE

The first of its kind in Dubai, a world class Pitch and Putt golf course featuring 18 holes of golf, each meticulously designed.

It is the perfect way to unwind after a long day at work. After all, there's nothing like sinking a long putt on a sun-drenched fairway. The clubhouse is appointed with upscale amenities and a patio overlooking the greens.



DINE BY THE WATERS

The food & beverage esplanade that borders the calm waters is also a feast for the palate to suit every taste and time.

Spread over almost half a kilometer, it offers fine restaurants for an intimate dinner, quick catch-up over a cup of coffee, or a power lunch.



SKY GARDEN

Rise high above and look at the stars. Soak in the stunning views of the city. Catch the sun rays when they rise and set. Do it all from the magnificent panoramic sky terrace in each tower



COURTYARD FOR THE SENSES



All the 5 Towers at Sobha One have interconnected four themed courtyards. As private outdoor retreats, these lush, landscaped spaces add to the overall aesthetic.

RELAX

In a fast-paced world, finding ways to relax is more important than ever. Take a leisurely stroll through the tree avenues, do yoga on the group decks, or stroll in the gardens. And when you need to refuel, enjoy a meal at the BBQ & dining areas or catch a movie under the stars on our cinema screen. There is something for everyone





REMEMBER

The family courtyard is a great way to spend quality time together. You can pack a picnic lunch and enjoy the beautiful weather. Or spending a day cooling off in the water, splashing with the little ones. So, come on down and make memories with your loved ones!





RECHARGE

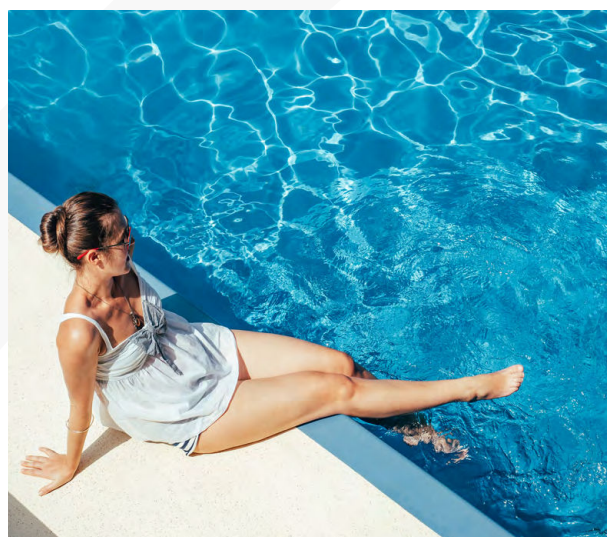
We believe that fitness should be fun! That's why we've created a unique courtyard that combines the best of gyms with exciting new indoor and outdoor features from static bikes, treadmills, circuit training areas and battle ropes. So sweat it out and be the best version of yourself.





REFRESH

This themed courtyard is the way to do just that after a long day. Step into the pool area, and the stress of daily life melts away. Feel your muscles loosening and your mind clearing as you swim laps. Close your eyes and let the warm sun wash over you, lulling you into a state of relaxation.





SOBHA ONE



FLEXIBLE PAYMENT PLAN

60%

During Construction

40%

On Completion

Grand 1 to 4 Bedroom apartments

ONE

awaits you...

LOCATION MAP




**RAS AL KHOR
 WILDLIFE SANCTUARY**
 05 MINUTES


**MEYDAN
 RACE COURSE**
 10 MINUTES



**SOBHA HARTLAND &
 2 INTERNATIONAL SCHOOLS**
 10 MINUTES


**DUBAI INTERNATIONAL
 AIRPORT**
 12 MINUTES


BUSINESS BAY
 12 MINUTES


THE DUBAI MALL
 15 MINUTES


**BURJ KHALIFA &
 DOWNTOWN DUBAI**
 15 MINUTES

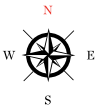

DUBAI FRAME
 15 MINUTES


DUBAI OPERA
 15 MINUTES

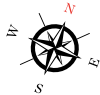
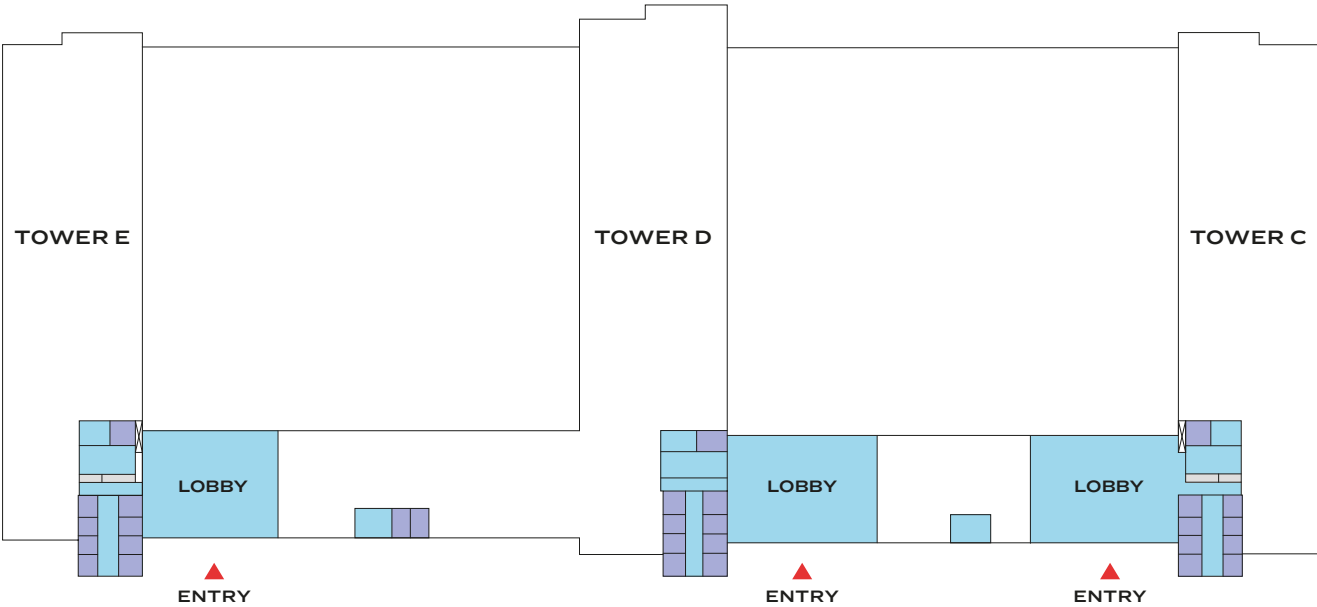

PALM JUMEIRAH
 25 MINUTES

*Image used is for representation purpose only

MASTER PLAN



GROUND FLOOR

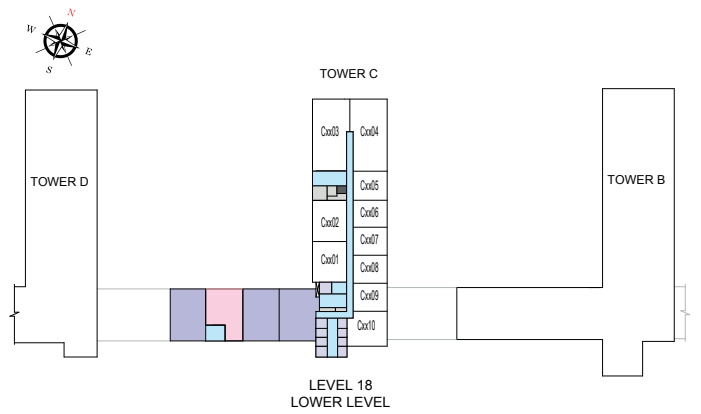
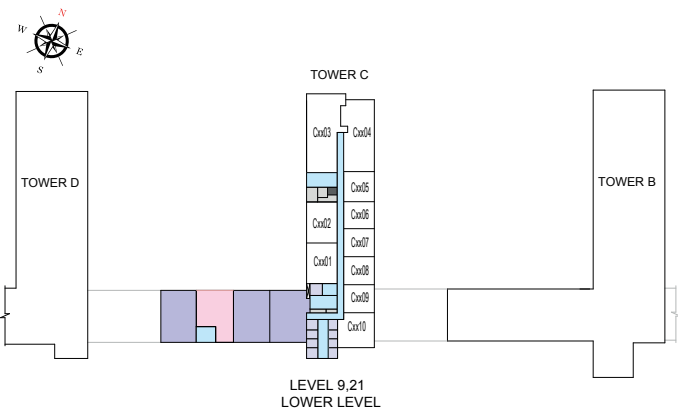
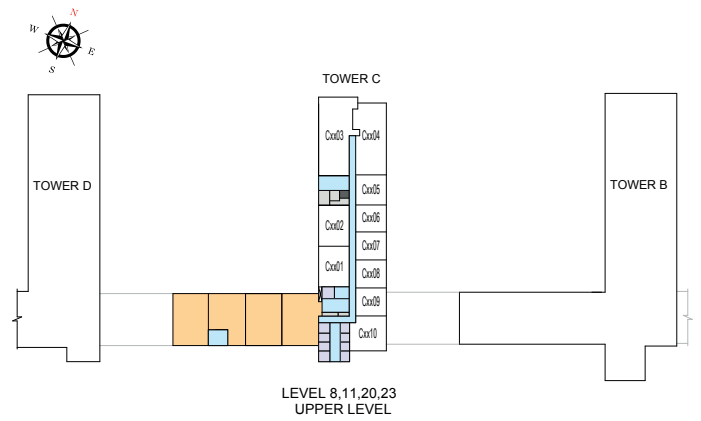
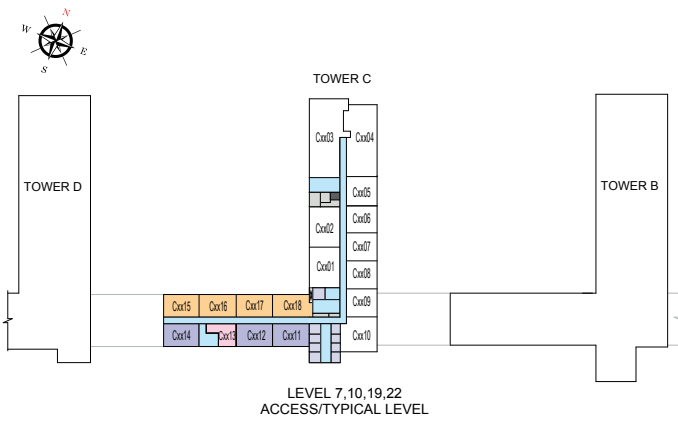


TOWER C

DUPLEX UNIT PLAN LAYOUTS

FLOOR PLAN LAYOUT (DUPLEX)

TOWER C



- 2 BED DUPLEX UNIT
- 4 BED DUPLEX UNIT
- SERVICES
- 3 BED DUPLEX UNIT
- LOBBIES, CORRIDORS & STAIRS
- GARBAGE ROOM
- LIFTS

Disclaimer: 1. All dimensions are in metric, measured to wall finishes. 2. All materials, dimensions & drawings are approximate. 3. Information is subject to change without notice, at developer's absolute discretion. 4. Actual area may vary from the stated area. 5. Drawing are not to scale. 6. All images used are for illustrative purpose only and do not represent the actual size, features, specifications, fittings and furnishings. 7. The developer reserves the right to make revisions/ alterations, at its absolute discretion, without any liability whatsoever.

TOWER C

DUPLEX UNIT PLAN LAYOUTS

2 BEDROOM DUPLEX APARTMENT

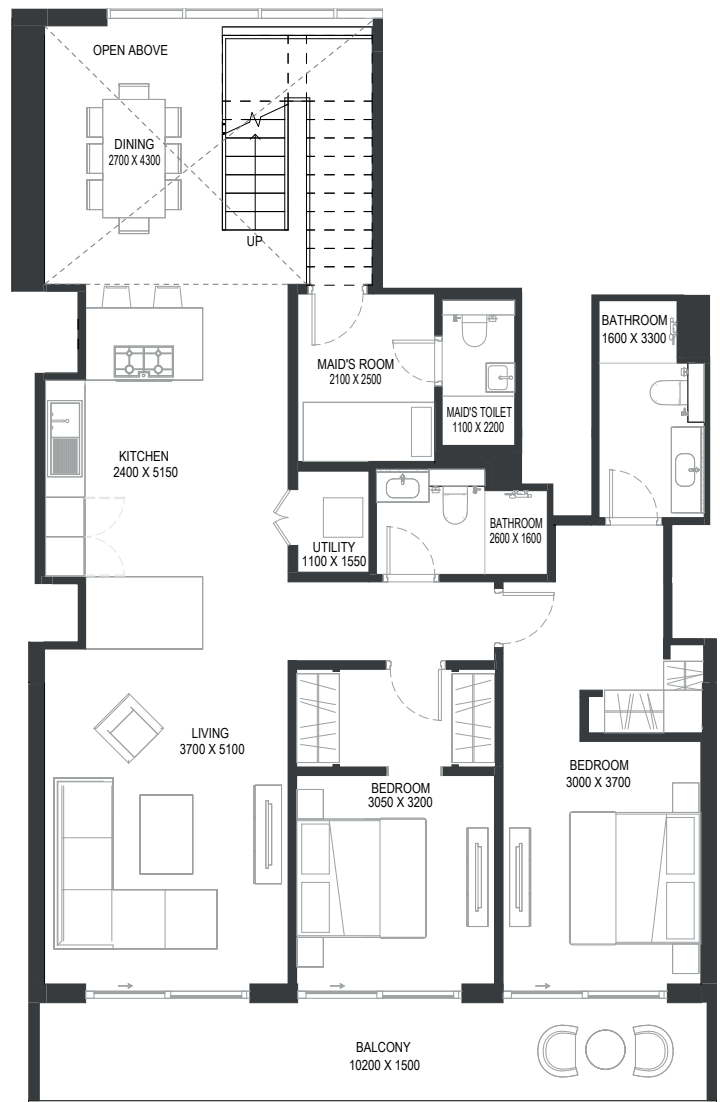
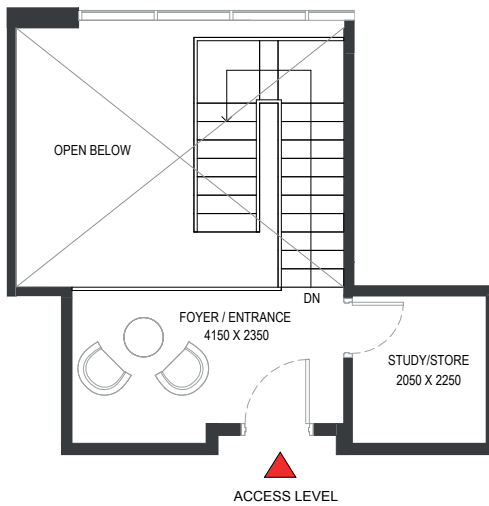
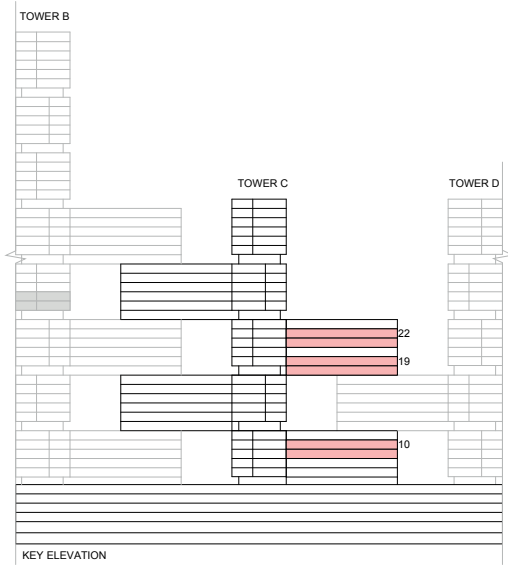
TYPE A (with maid room and study room + balcony)

TOTAL SALEABLE AREA

SUITE = 1,705.33 SQ.FT.

BALCONY = 182.34 SQ.FT.

TOTAL = 1,887.67 SQ.FT.



List of unit numbers with this unit plan:

VIEWS

Ras Al Khor, Creek, Amenities
C1013

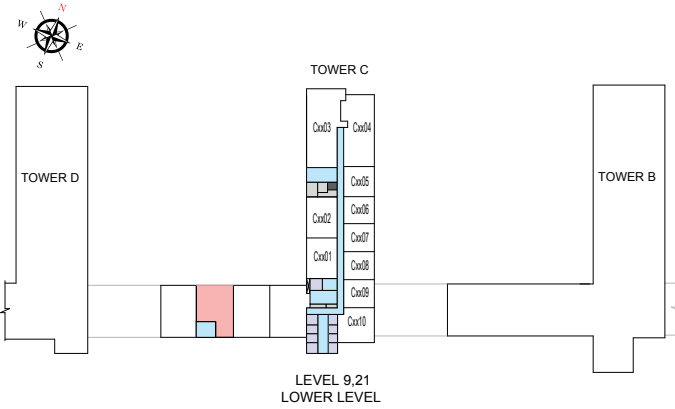
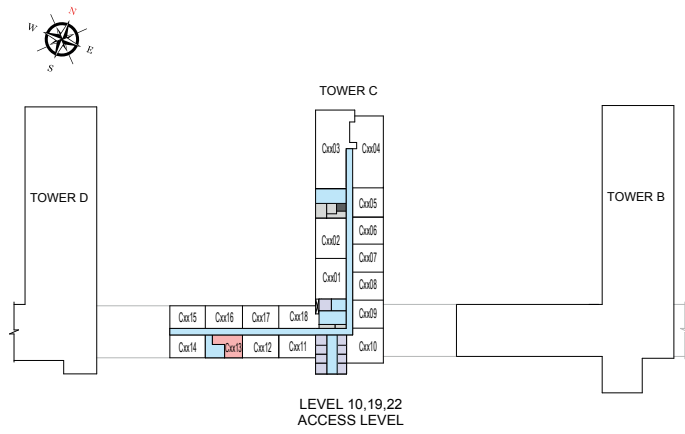
Ras Al Khor, Golf Course, Creek, Amenities
C1913, C2213

Disclaimer: 1. All dimensions are in metric, measured to wall finishes. 2. All materials, dimensions & drawings are approximate. 3. Information is subject to change without notice, at developer's absolute discretion. 4. Actual area may vary from the stated area. 5. Drawing are not to scale. 6. All images used are for illustrative purpose only and do not represent the actual size, features, specifications, fittings and furnishings. 7. The developer reserves the right to make revisions/ alterations, at its absolute discretion, without any liability whatsoever.

2 BEDROOM DUPLEX APARTMENT
TYPE A (with maid room and study room + balcony)

TOTAL SALEABLE AREA
 SUITE = 1,705.33 SQ.FT.
 BALCONY = 182.34 SQ.FT.
 TOTAL = 1,887.67 SQ.FT.

UNIT



List of unit numbers with this unit plan:

VIEWS

Ras Al Khor, Creek, Amenities
 C1013

Ras Al Khor, Golf Course, Creek, Amenities
 C1913, C2213

Disclaimer: 1. All dimensions are in metric, measured to wall finishes. 2. All materials, dimensions & drawings are approximate. 3. Information is subject to change without notice, at developer's absolute discretion. 4. Actual area may vary from the stated area. 5. Drawing are not to scale. 6. All images used are for illustrative purpose only and do not represent the actual size, features, specifications, fittings and furnishings. 7. The developer reserves the right to make revisions/ alterations, at its absolute discretion, without any liability whatsoever.

3 BEDROOM DUPLEX APARTMENT

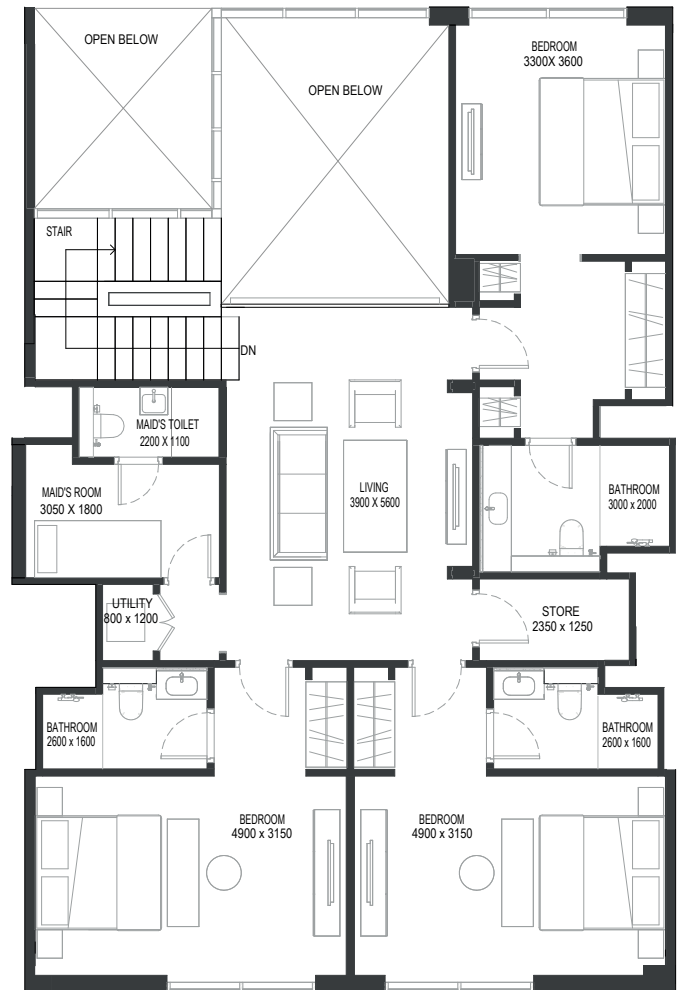
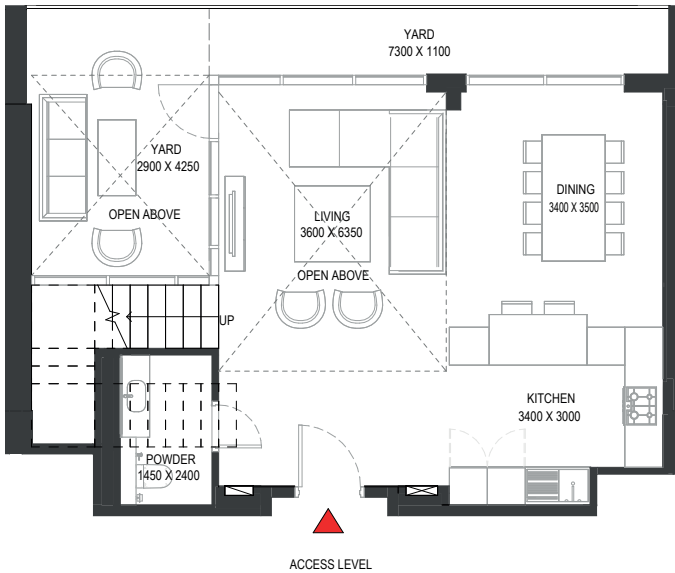
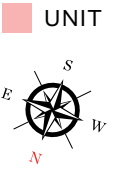
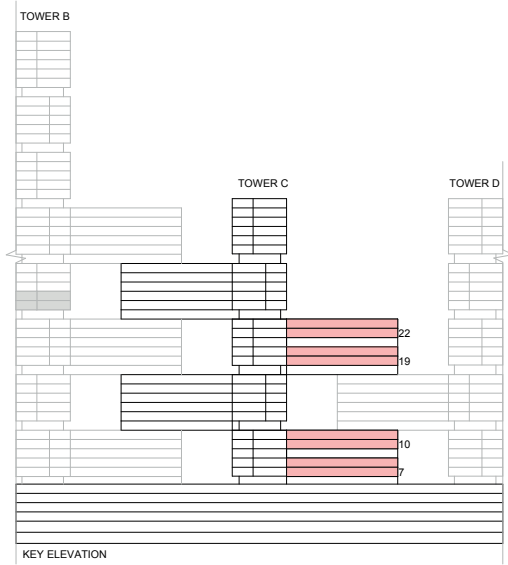
TYPE A (with maid room, store room and powder room + yard)

TOTAL SALEABLE AREA

SUITE = 2,051.92 SQ.FT.

YARD = 231.64 SQ.FT.

TOTAL = 2,283.56 SQ.FT.



List of unit numbers with this unit plan:

VIEWS

Ras Al Khor, Amenities
C717

Ras Al Khor, Golf Course, Amenities
C1017, C1917, C2217

Disclaimer: 1. All dimensions are in metric, measured to wall finishes. 2. All materials, dimensions & drawings are approximate. 3. Information is subject to change without notice, at developer's absolute discretion. 4. Actual area may vary from the stated area. 5. Drawing are not to scale. 6. All images used are for illustrative purpose only and do not represent the actual size, features, specifications, fittings and furnishings. 7. The developer reserves the right to make revisions/ alterations, at its absolute discretion, without any liability whatsoever.

3 BEDROOM DUPLEX APARTMENT

TYPE A (with maid room, store room and powder room + yard)

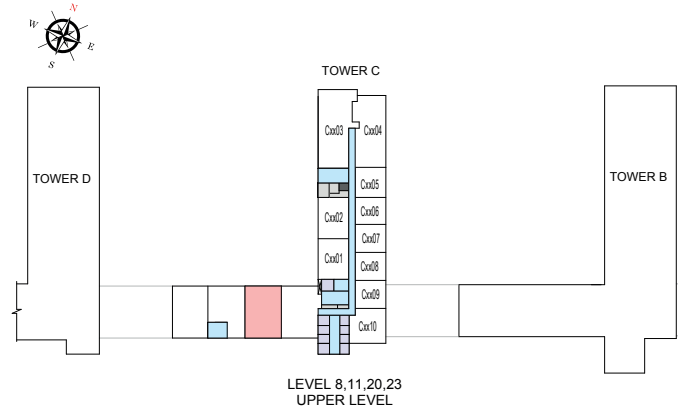
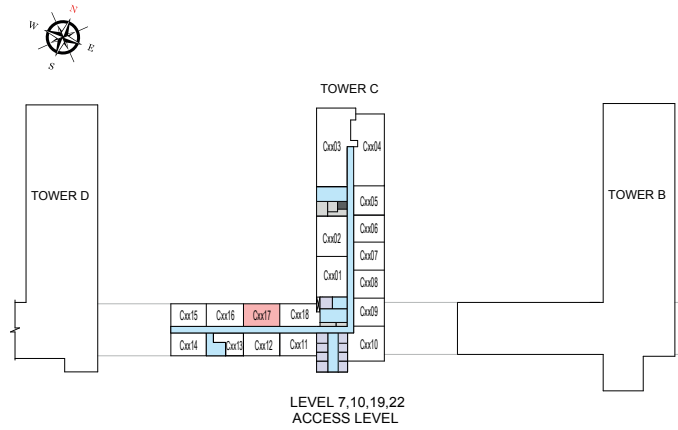
TOTAL SALEABLE AREA

SUITE = 2,051.92 SQ.FT.

YARD = 231.64 SQ.FT.

TOTAL = 2,283.56 SQ.FT.

■ UNIT



List of unit numbers with this unit plan:

VIEWS

Ras Al Khor, Amenities

C717

Ras Al Khor, Golf Course, Amenities

C1017, C1917, C2217

Disclaimer: 1. All dimensions are in metric, measured to wall finishes. 2. All materials, dimensions & drawings are approximate. 3. Information is subject to change without notice, at developer's absolute discretion. 4. Actual area may vary from the stated area. 5. Drawing are not to scale. 6. All images used are for illustrative purpose only and do not represent the actual size, features, specifications, fittings and furnishings. 7. The developer reserves the right to make revisions/ alterations, at its absolute discretion, without any liability whatsoever.

3 BEDROOM DUPLEX APARTMENT

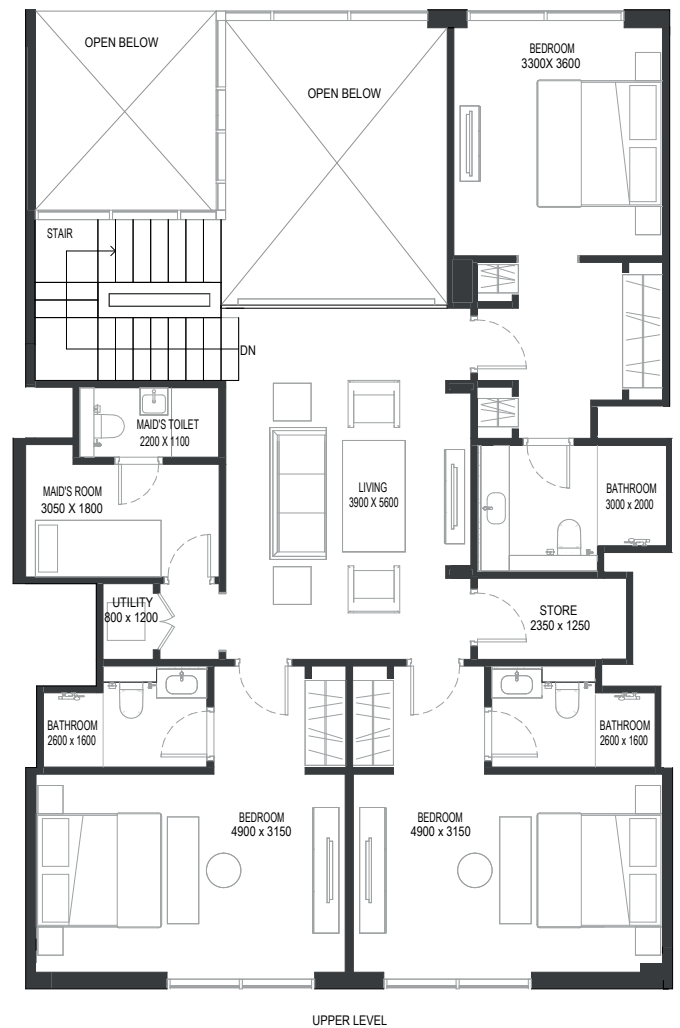
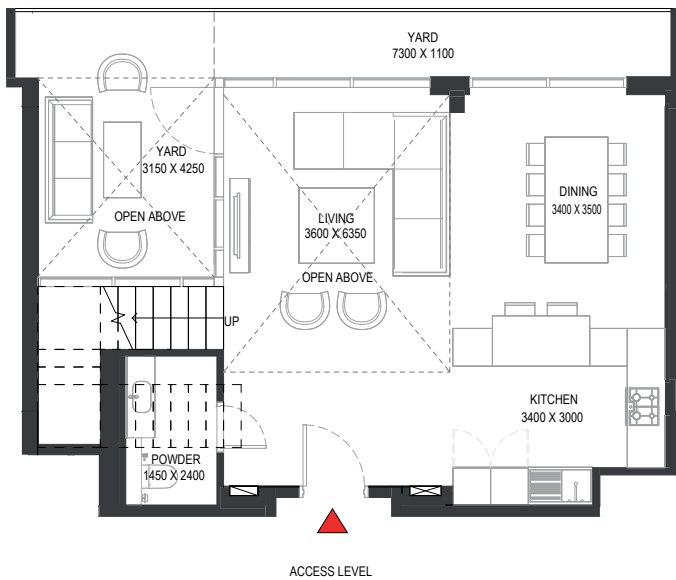
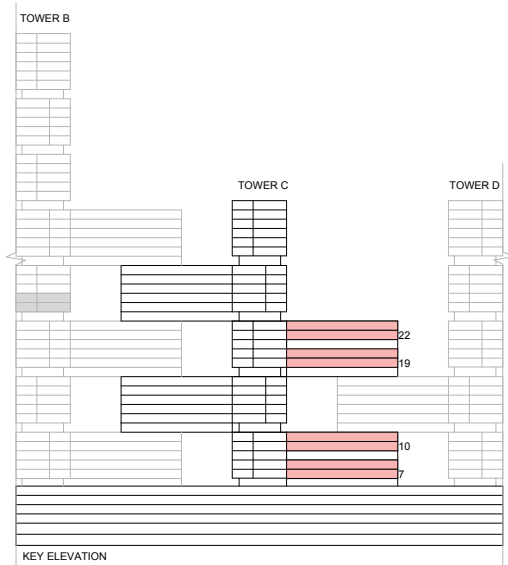
TYPE A (with maid room, store room and powder room + yard) VARIANT 1

TOTAL SALEABLE AREA

SUITE = 2,051.92 SQ.FT.

YARD = 234.12 SQ.FT.

TOTAL = 2,286.04 SQ.FT.



List of unit numbers with this unit plan:

VIEWS

Ras Al Khor, Amenities
C715

Ras Al Khor, Golf Course, Amenities
C1015, C1915

Disclaimer: 1. All dimensions are in metric, measured to wall finishes. 2. All materials, dimensions & drawings are approximate. 3. Information is subject to change without notice, at developer's absolute discretion. 4. Actual area may vary from the stated area. 5. Drawing are not to scale. 6. All images used are for illustrative purpose only and do not represent the actual size, features, specifications, fittings and furnishings. 7. The developer reserves the right to make revisions/ alterations, at its absolute discretion, without any liability whatsoever.

3 BEDROOM DUPLEX APARTMENT

TYPE A (with maid room, store room and powder room + yard) VARIANT 1

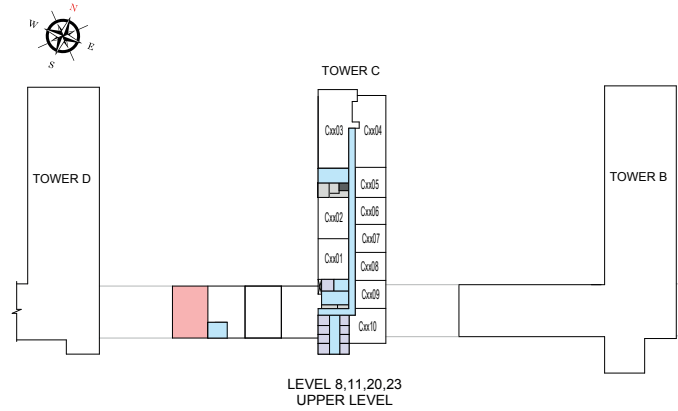
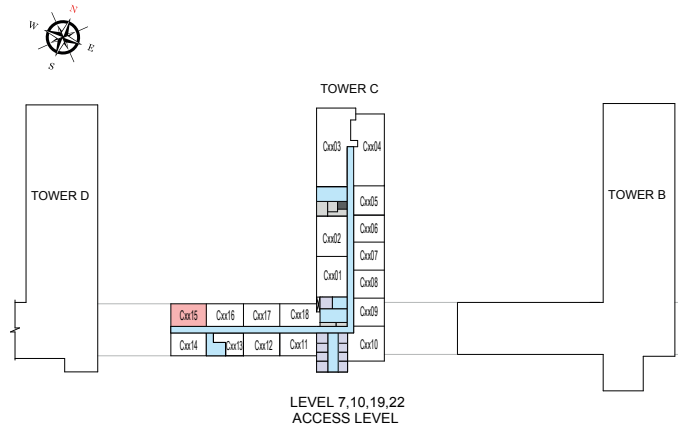
TOTAL SALEABLE AREA

SUITE = 2,051.92 SQ.FT.

YARD = 234.12 SQ.FT.

TOTAL = 2,286.04 SQ.FT.

UNIT



List of unit numbers with this unit plan:

VIEWS

Ras Al Khor, Amenities
C715

Ras Al Khor, Golf Course, Amenities
C1015, C1915

Disclaimer: 1. All dimensions are in metric, measured to wall finishes. 2. All materials, dimensions & drawings are approximate. 3. Information is subject to change without notice, at developer's absolute discretion. 4. Actual area may vary from the stated area. 5. Drawing are not to scale. 6. All images used are for illustrative purpose only and do not represent the actual size, features, specifications, fittings and furnishings. 7. The developer reserves the right to make revisions/ alterations, at its absolute discretion, without any liability whatsoever.

3 BEDROOM DUPLEX APARTMENT

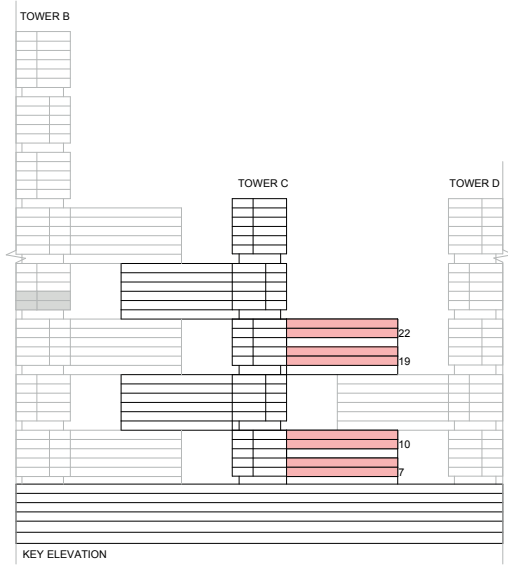
TYPE B (with maid room, store room and powder room + yard)

TOTAL SALEABLE AREA

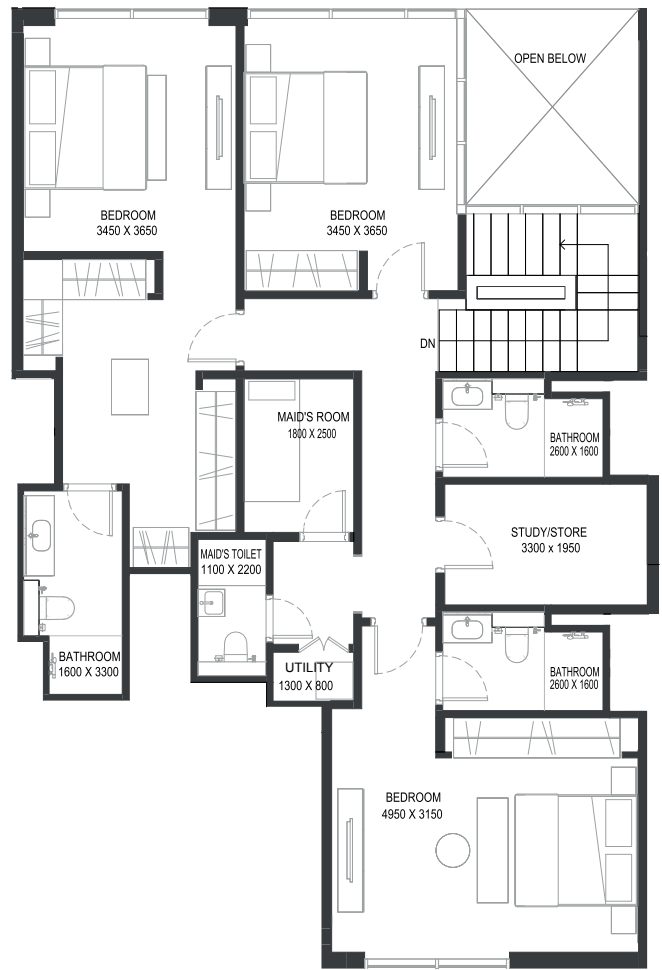
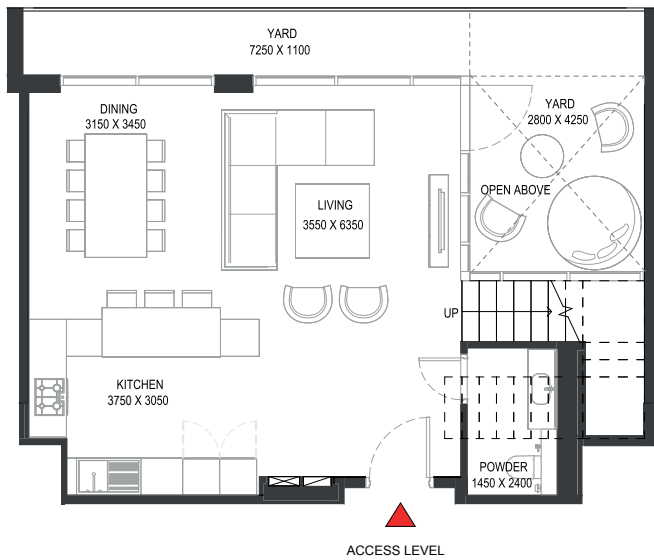
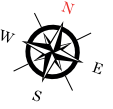
SUITE = 2,006.82 SQ.FT.

YARD = 232.39 SQ.FT.

TOTAL = 2,239.21 SQ.FT.



UNIT



UPPER LEVEL

List of unit numbers with this unit plan:

VIEWS

Ras Al Khor, Amenities
C716

Ras Al Khor, Golf Course, Amenities
C1016, C1916, C2216

Disclaimer: 1. All dimensions are in metric, measured to wall finishes. 2. All materials, dimensions & drawings are approximate. 3. Information is subject to change without notice, at developer's absolute discretion. 4. Actual area may vary from the stated area. 5. Drawing are not to scale. 6. All images used are for illustrative purpose only and do not represent the actual size, features, specifications, fittings and furnishings. 7. The developer reserves the right to make revisions/ alterations, at its absolute discretion, without any liability whatsoever.

3 BEDROOM DUPLEX APARTMENT

TYPE B (with maid room, store room and powder room + yard)

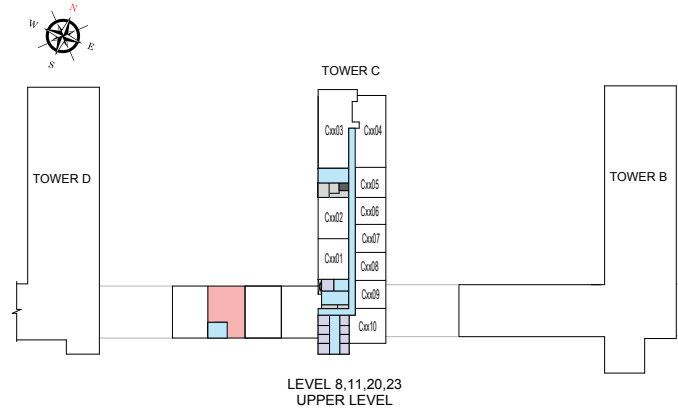
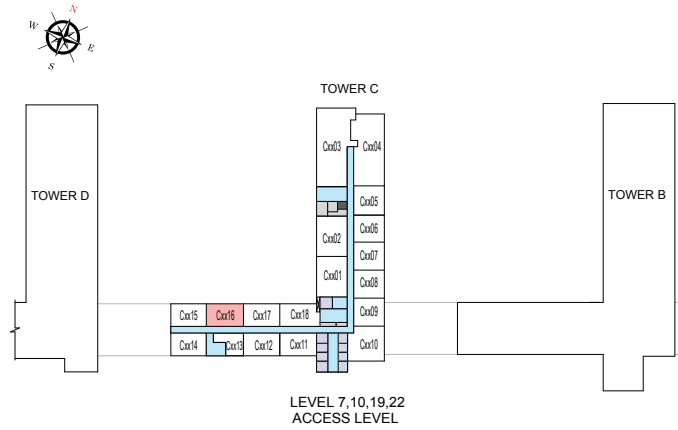
TOTAL SALEABLE AREA

SUITE = 2,006.82 SQ.FT.

YARD = 232.39 SQ.FT.

TOTAL = 2,239.21 SQ.FT.

UNIT



List of unit numbers with this unit plan:

VIEWS

Ras Al Khor, Amenities
C716

Ras Al Khor, Golf Course, Amenities
C1016, C1916, C2216

Disclaimer: 1. All dimensions are in metric, measured to wall finishes. 2. All materials, dimensions & drawings are approximate. 3. Information is subject to change without notice, at developer's absolute discretion. 4. Actual area may vary from the stated area. 5. Drawing are not to scale. 6. All images used are for illustrative purpose only and do not represent the actual size, features, specifications, fittings and furnishings. 7. The developer reserves the right to make revisions/ alterations, at its absolute discretion, without any liability whatsoever.

3 BEDROOM DUPLEX APARTMENT

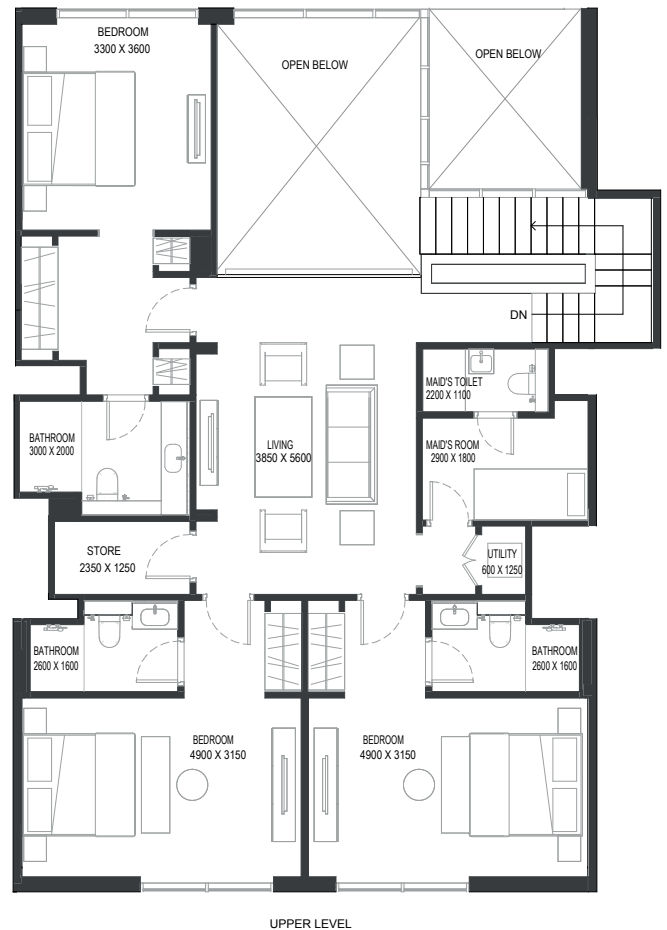
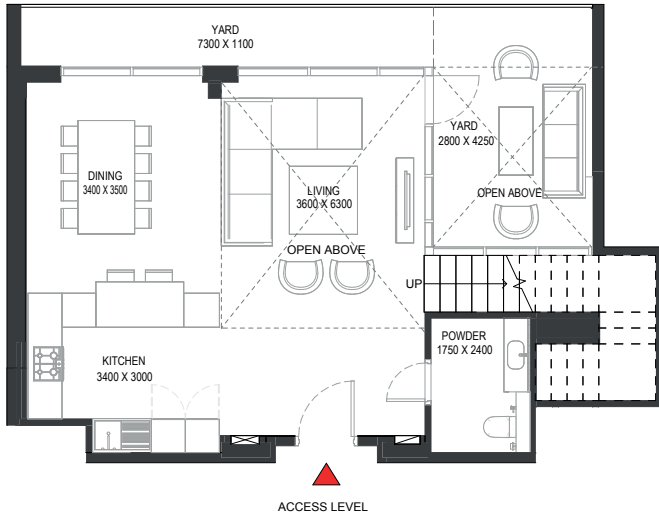
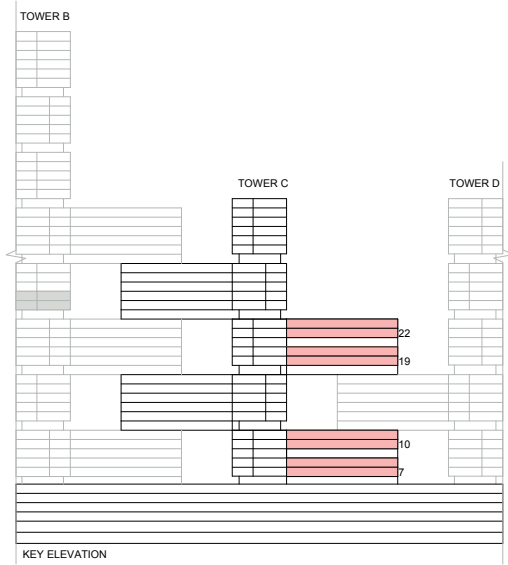
TYPE C (with maid room, store room and powder room + yard)

TOTAL SALEABLE AREA

SUITE = 2,147.08 SQ.FT.

YARD = 230.24 SQ.FT.

TOTAL = 2,377.32 SQ.FT.



List of unit numbers with this unit plan:

VIEWS

Ras Al Khor, Amenities
C718

Ras Al Khor, Golf Course, Amenities
C1018, C1918, C2218

Disclaimer: 1. All dimensions are in metric, measured to wall finishes. 2. All materials, dimensions & drawings are approximate. 3. Information is subject to change without notice, at developer's absolute discretion. 4. Actual area may vary from the stated area. 5. Drawing are not to scale. 6. All images used are for illustrative purpose only and do not represent the actual size, features, specifications, fittings and furnishings. 7. The developer reserves the right to make revisions/ alterations, at its absolute discretion, without any liability whatsoever.

3 BEDROOM DUPLEX APARTMENT

TYPE C (with maid room, store room and powder room + yard)

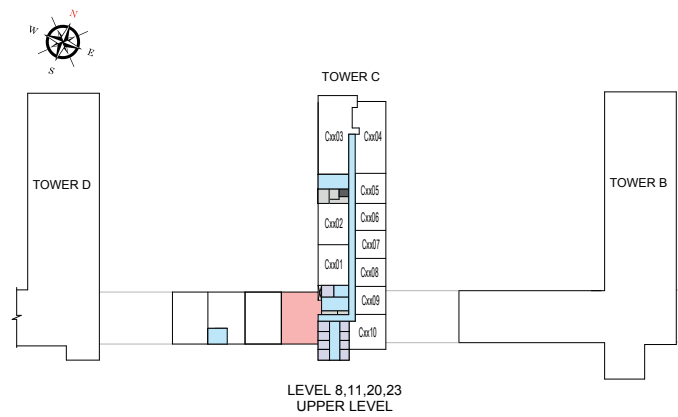
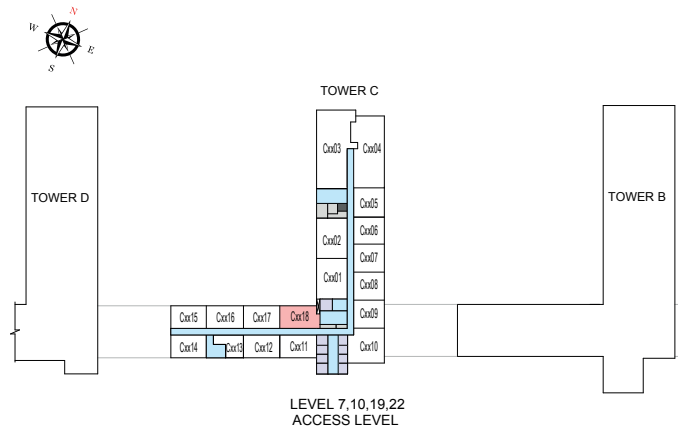
TOTAL SALEABLE AREA

SUITE = 2,147.08 SQ.FT.

YARD = 230.24 SQ.FT.

TOTAL = 2,377.32 SQ.FT.

UNIT



List of unit numbers with this unit plan:

VIEWS

Ras Al Khor, Amenities
C718

Ras Al Khor, Golf Course, Amenities
C1018, C1918, C2218

Disclaimer: 1. All dimensions are in metric, measured to wall finishes. 2. All materials, dimensions & drawings are approximate. 3. Information is subject to change without notice, at developer's absolute discretion. 4. Actual area may vary from the stated area. 5. Drawing are not to scale. 6. All images used are for illustrative purpose only and do not represent the actual size, features, specifications, fittings and furnishings. 7. The developer reserves the right to make revisions/ alterations, at its absolute discretion, without any liability whatsoever.

4 BEDROOM DUPLEX APARTMENT

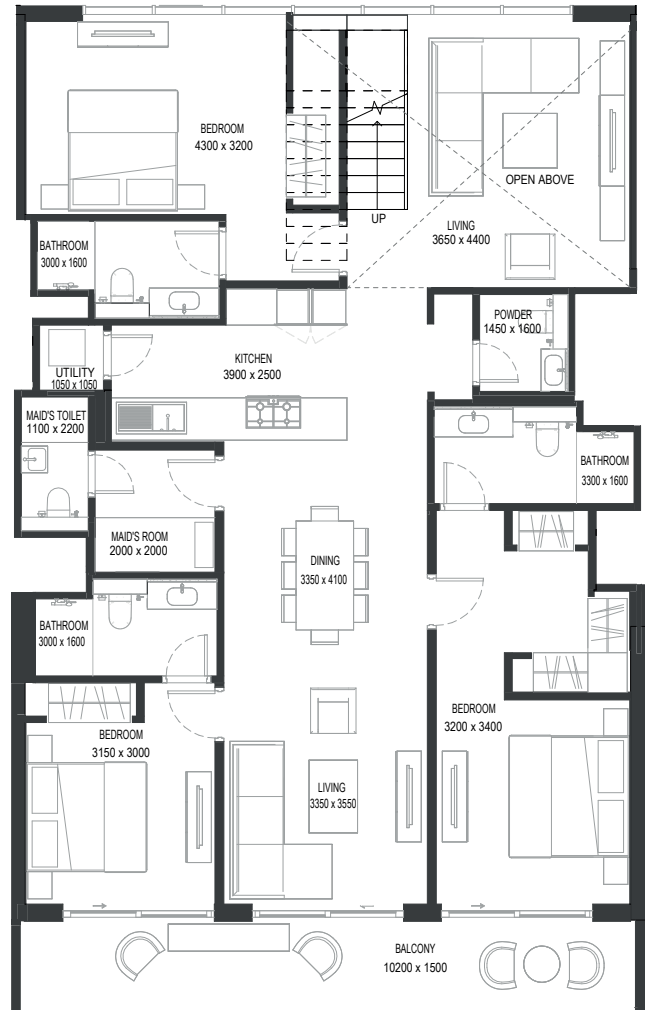
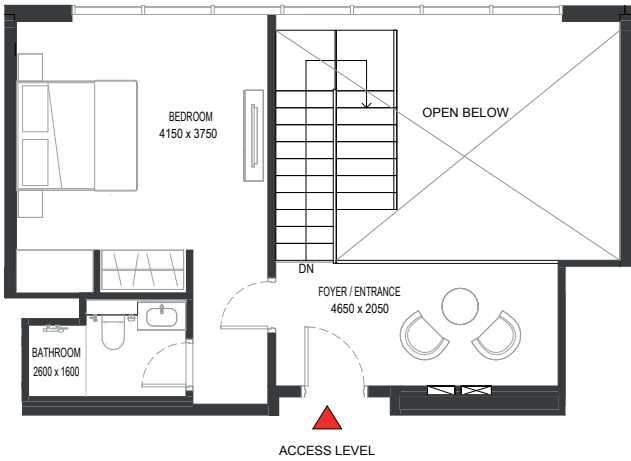
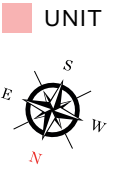
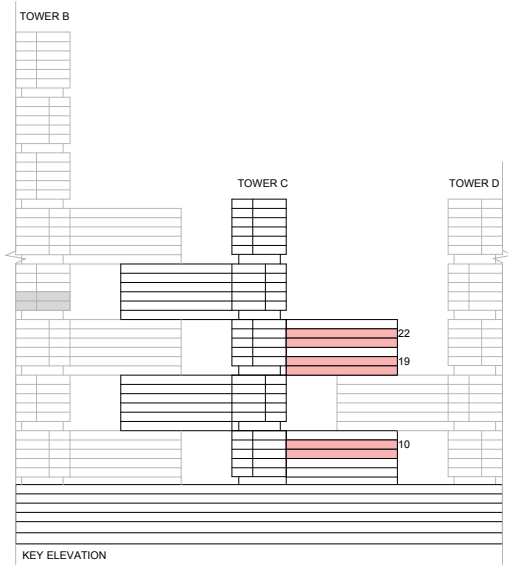
TYPE A (with maid room and powder room + balcony)

TOTAL SALEABLE AREA

SUITE = 2,177.75 SQ.FT.

BALCONY = 182.34 SQ.FT.

TOTAL = 2,360.09 SQ.FT.



LOWER LEVEL

List of unit numbers with this unit plan:

VIEWS

Ras Al Khor, Amenities
C1012

Ras Al Khor, Golf Course, Amenities
C1912, C2212

Disclaimer: 1. All dimensions are in metric, measured to wall finishes. 2. All materials, dimensions & drawings are approximate. 3. Information is subject to change without notice, at developer's absolute discretion. 4. Actual area may vary from the stated area. 5. Drawing are not to scale. 6. All images used are for illustrative purpose only and do not represent the actual size, features, specifications, fittings and furnishings. 7. The developer reserves the right to make revisions/ alterations, at its absolute discretion, without any liability whatsoever.

4 BEDROOM DUPLEX APARTMENT
TYPE A (with maid room and powder room + balcony)

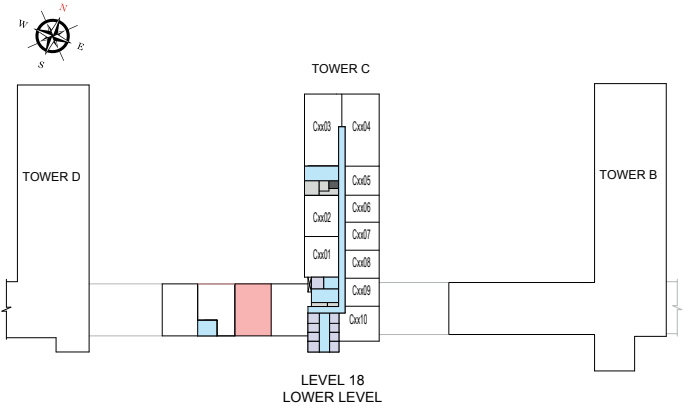
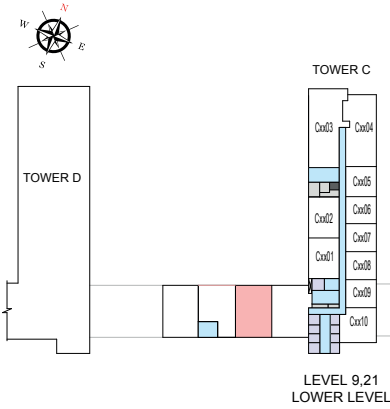
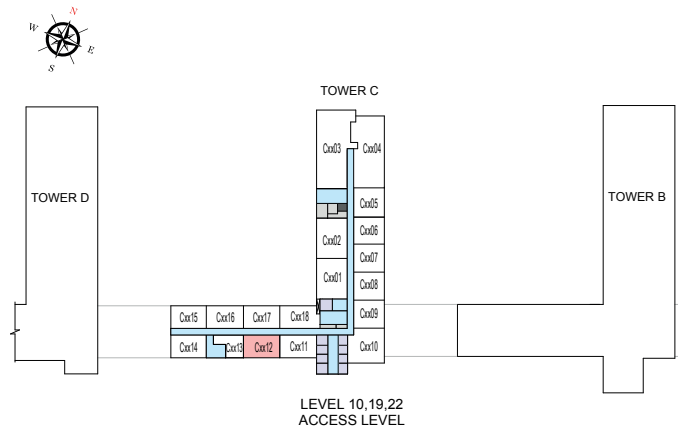
TOTAL SALEABLE AREA

SUITE = 2,177.75 SQ.FT.

BALCONY = 182.34 SQ.FT.

TOTAL = 2,360.09 SQ.FT.

UNIT



List of unit numbers with this unit plan:

VIEWS

Ras Al Khor, Amenities

C1012

Ras Al Khor, Golf Course, Amenities

C1912, C2212

Disclaimer: 1. All dimensions are in metric, measured to wall finishes. 2. All materials, dimensions & drawings are approximate. 3. Information is subject to change without notice, at developer's absolute discretion. 4. Actual area may vary from the stated area. 5. Drawing are not to scale. 6. All images used are for illustrative purpose only and do not represent the actual size, features, specifications, fittings and furnishings. 7. The developer reserves the right to make revisions/ alterations, at its absolute discretion, without any liability whatsoever.

4 BEDROOM DUPLEX APARTMENT

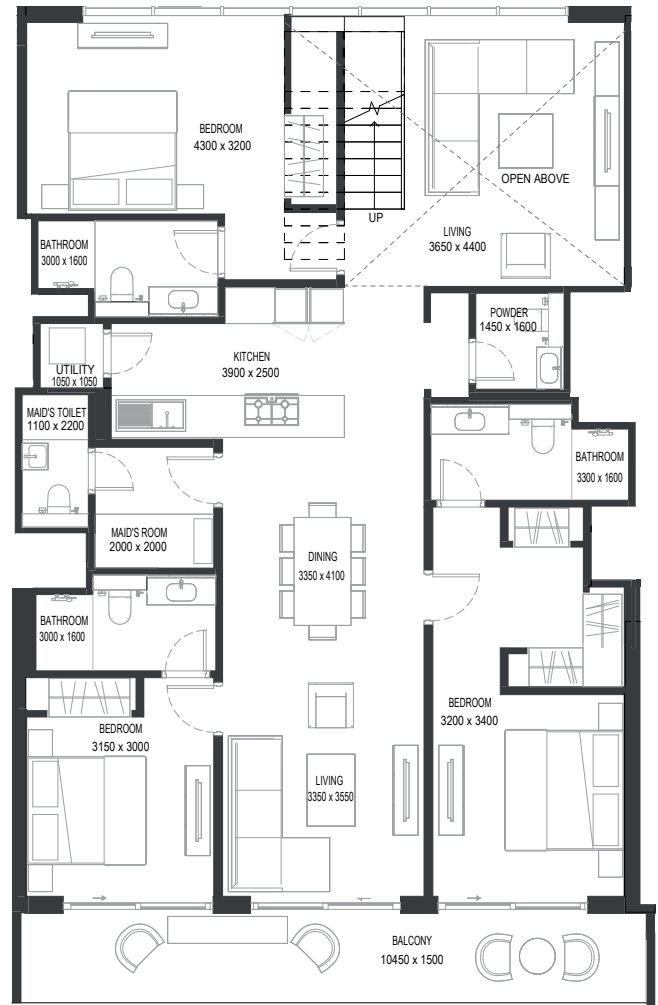
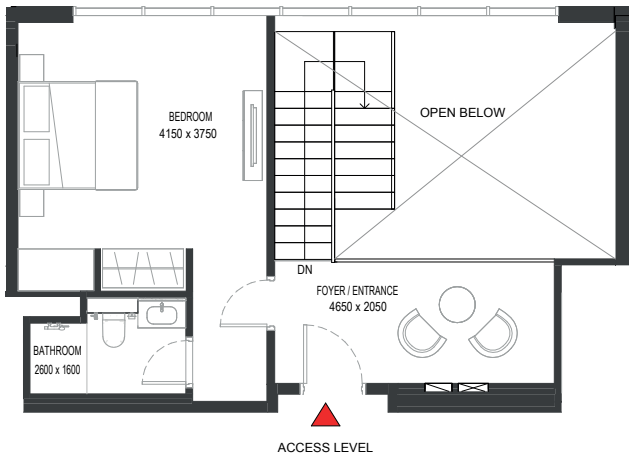
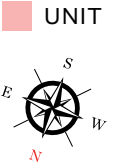
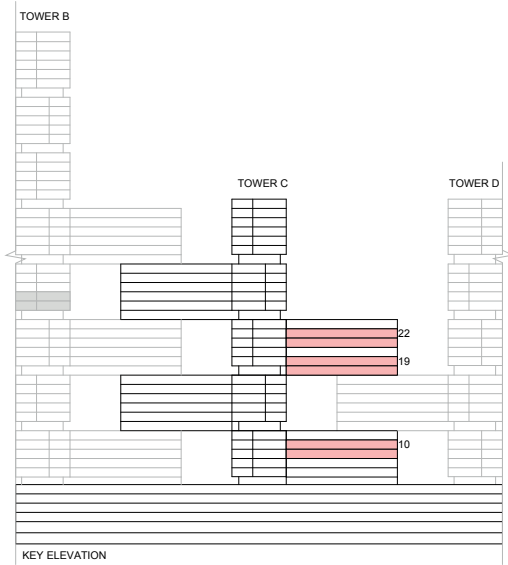
TYPE A (with maid room and powder room + balcony) VARIANT 1

TOTAL SALEABLE AREA

SUITE = 2,177.75 SQ.FT.

BALCONY = 185.46 SQ.FT.

TOTAL = 2,363.21 SQ.FT.



List of unit numbers with this unit plan:

VIEWS

Ras Al Khor, Amenities

C1014

Ras Al Khor, Golf Course, Amenities

C1914, C2214

Disclaimer: 1. All dimensions are in metric, measured to wall finishes. 2. All materials, dimensions & drawings are approximate. 3. Information is subject to change without notice, at developer's absolute discretion. 4. Actual area may vary from the stated area. 5. Drawing are not to scale. 6. All images used are for illustrative purpose only and do not represent the actual size, features, specifications, fittings and furnishings. 7. The developer reserves the right to make revisions/ alterations, at its absolute discretion, without any liability whatsoever.

4 BEDROOM DUPLEX APARTMENT

TYPE A (with maid room and powder room + balcony) VARIANT 1

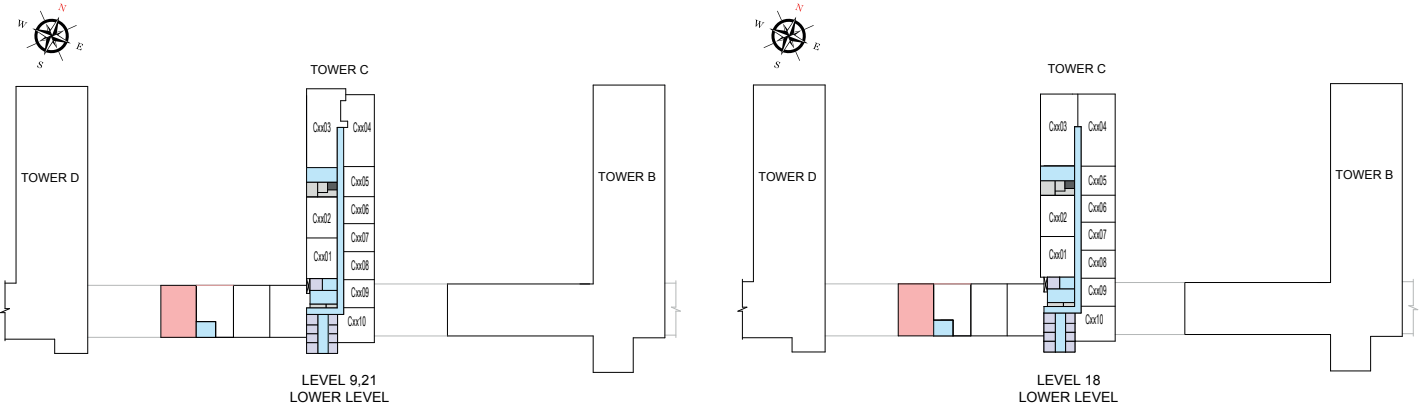
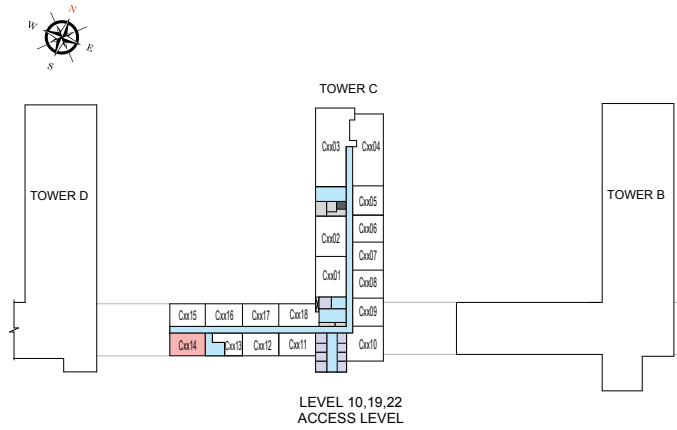
TOTAL SALEABLE AREA

SUITE = 2,177.75 SQ.FT.

BALCONY = 185.46 SQ.FT.

TOTAL = 2,363.21 SQ.FT.

UNIT



List of unit numbers with this unit plan:

VIEWS

Ras Al Khor, Amenities

C1014

Ras Al Khor, Golf Course, Amenities

C1914, C2214

Disclaimer: 1. All dimensions are in metric, measured to wall finishes. 2. All materials, dimensions & drawings are approximate. 3. Information is subject to change without notice, at developer's absolute discretion. 4. Actual area may vary from the stated area. 5. Drawing are not to scale. 6. All images used are for illustrative purpose only and do not represent the actual size, features, specifications, fittings and furnishings. 7. The developer reserves the right to make revisions/ alterations, at its absolute discretion, without any liability whatsoever.

4 BEDROOM DUPLEX APARTMENT

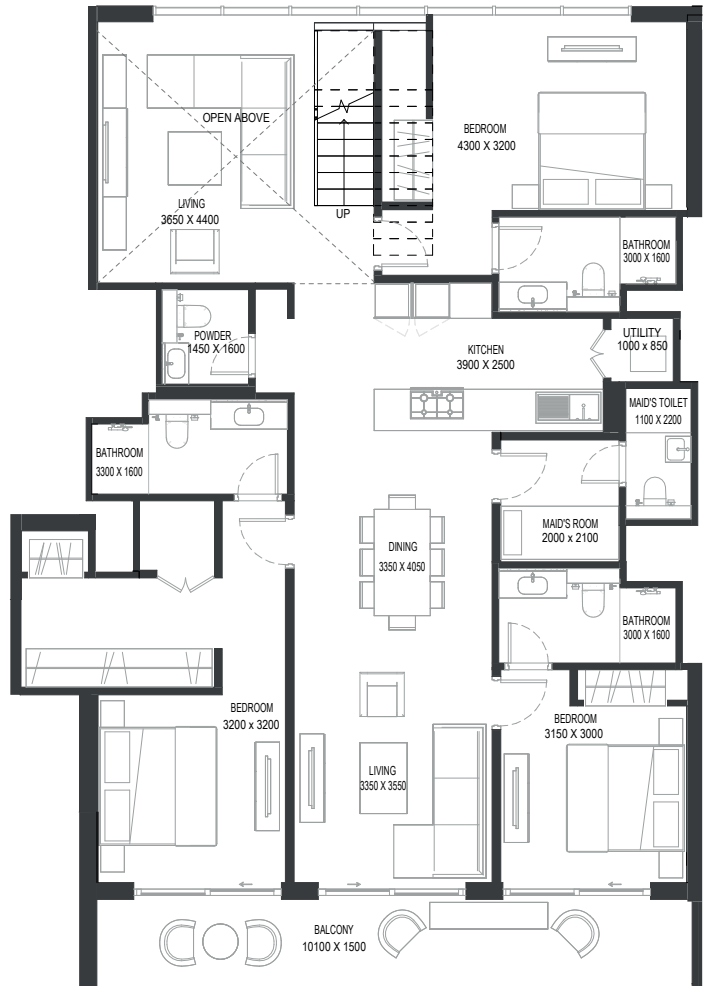
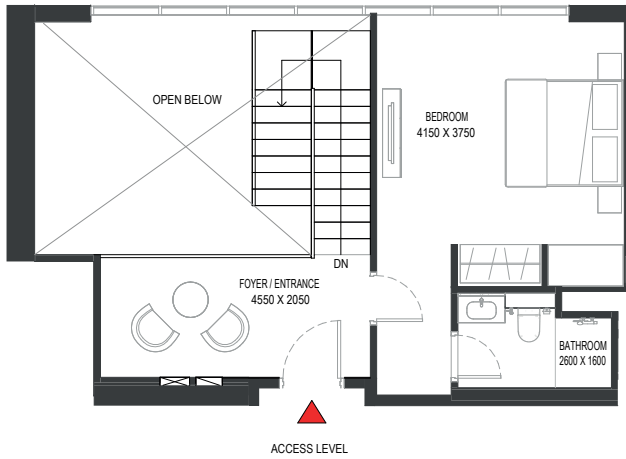
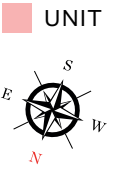
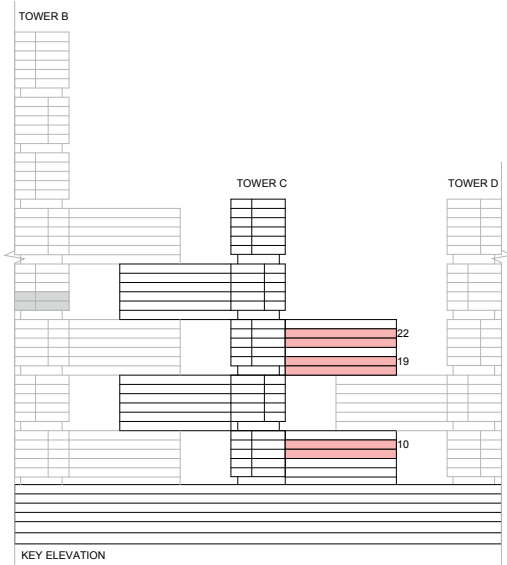
TYPE B (with maid room and powder room + balcony)

TOTAL SALEABLE AREA

SUITE = 2,229.42 SQ.FT.

BALCONY = 183.09 SQ.FT.

TOTAL = 2,412.51 SQ.FT.



List of unit numbers with this unit plan:

VIEWS

Ras Al Khor, Amenities

C1011

Ras Al Khor, Golf Course, Amenities

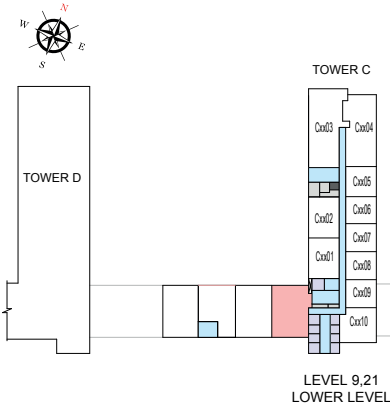
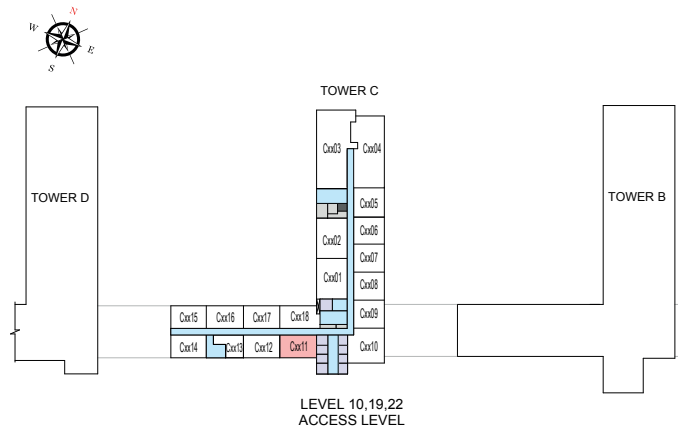
C1911, C2211

Disclaimer: 1. All dimensions are in metric, measured to wall finishes. 2. All materials, dimensions & drawings are approximate. 3. Information is subject to change without notice, at developer's absolute discretion. 4. Actual area may vary from the stated area. 5. Drawing are not to scale. 6. All images used are for illustrative purpose only and do not represent the actual size, features, specifications, fittings and furnishings. 7. The developer reserves the right to make revisions/ alterations, at its absolute discretion, without any liability whatsoever.

4 BEDROOM DUPLEX APARTMENT
TYPE B (with maid room and powder room + balcony)

TOTAL SALEABLE AREA
 SUITE = 2,229.42 SQ.FT.
 BALCONY = 183.09 SQ.FT.
 TOTAL = 2,412.51 SQ.FT.

UNIT



List of unit numbers with this unit plan:

VIEWS

Ras Al Khor, Amenities
 C1011

Ras Al Khor, Golf Course, Amenities
 C1911, C2211

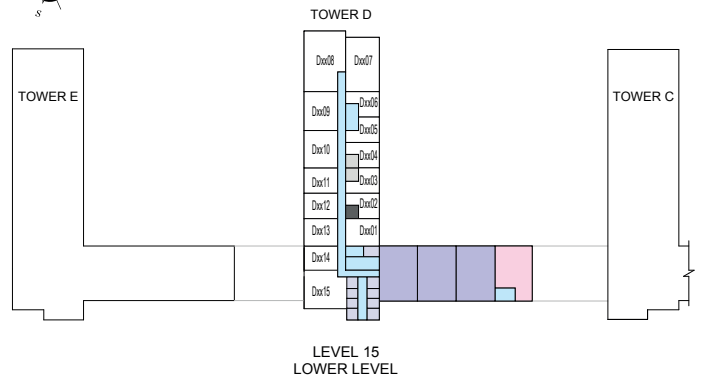
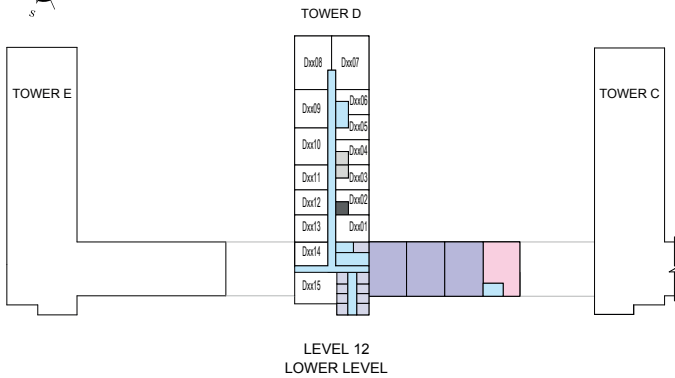
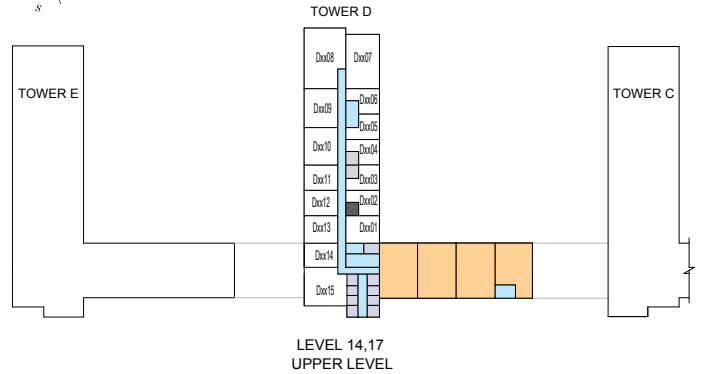
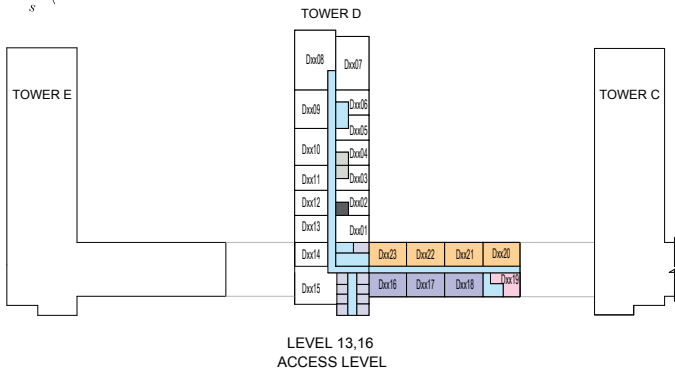
Disclaimer: 1. All dimensions are in metric, measured to wall finishes. 2. All materials, dimensions & drawings are approximate. 3. Information is subject to change without notice, at developer's absolute discretion. 4. Actual area may vary from the stated area. 5. Drawing are not to scale. 6. All images used are for illustrative purpose only and do not represent the actual size, features, specifications, fittings and furnishings. 7. The developer reserves the right to make revisions/ alterations, at its absolute discretion, without any liability whatsoever.

TOWER D

DUPLEX UNIT PLAN LAYOUTS

FLOOR PLAN LAYOUT (DUPLEX)

TOWER D



- 2 BED DUPLEX UNIT
- 4 BED DUPLEX UNIT
- SERVICES
- 3 BED DUPLEX UNIT
- LOBBIES, CORRIDORS & STAIRS
- LIFTS
- GARBAGE ROOM

Disclaimer: 1. All dimensions are in metric, measured to wall finishes. 2. All materials, dimensions & drawings are approximate. 3. Information is subject to change without notice, at developer's absolute discretion. 4. Actual area may vary from the stated area. 5. Drawing are not to scale. 6. All images used are for illustrative purpose only and do not represent the actual size, features, specifications, fittings and furnishings. 7. The developer reserves the right to make revisions/ alterations, at its absolute discretion, without any liability whatsoever.

2 BEDROOM DUPLEX APARTMENT

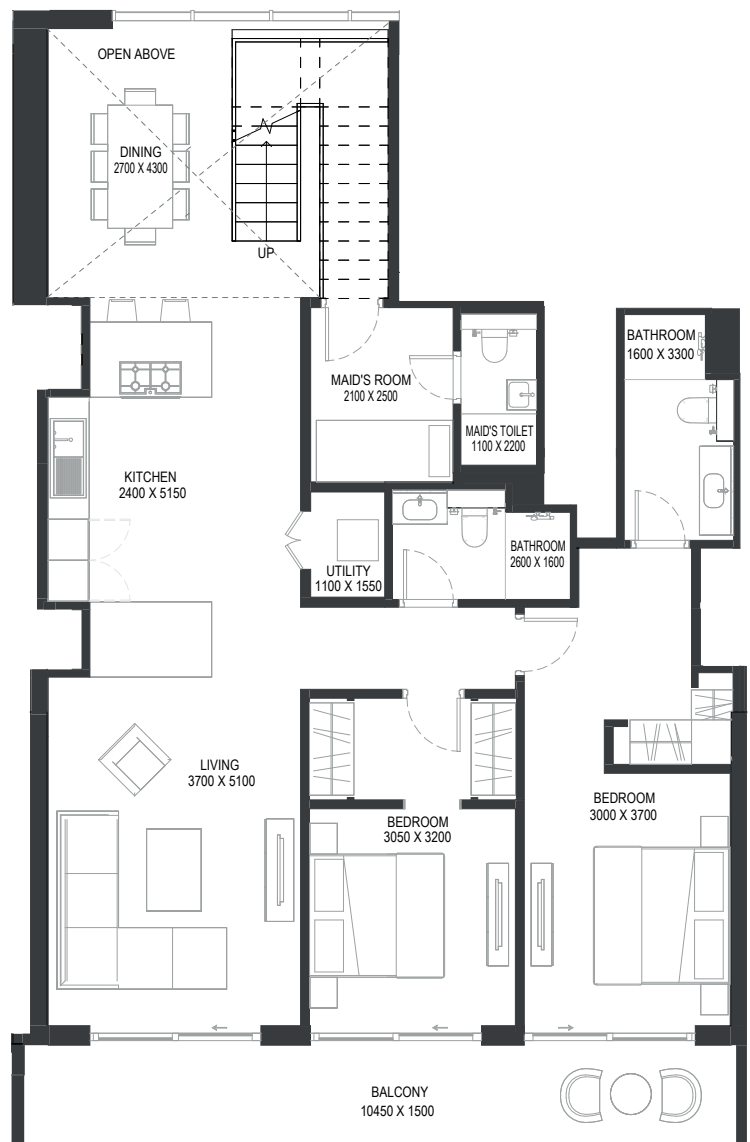
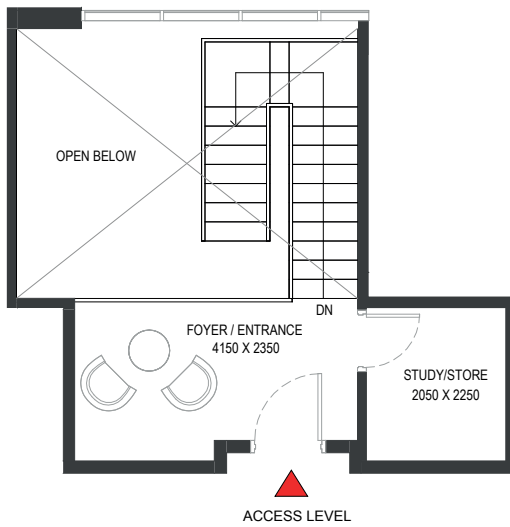
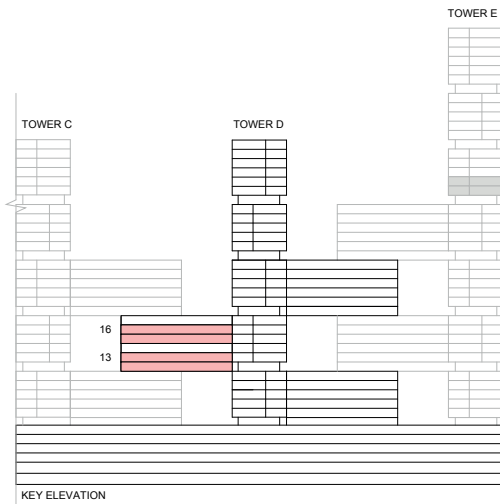
TYPE A (with maid room and study room + balcony) VARIANT 1

TOTAL SALEABLE AREA

SUITE = 1,705.33 SQ.FT.

BALCONY = 185.46 SQ.FT.

TOTAL = 1,890.79 SQ.FT.



List of unit numbers with this unit plan:

VIEWS

Ras Al Khor, Golf Course, Creek, Amenities
D1319, D1619

Disclaimer: 1. All dimensions are in metric, measured to wall finishes. 2. All materials, dimensions & drawings are approximate. 3. Information is subject to change without notice, at developer's absolute discretion. 4. Actual area may vary from the stated area. 5. Drawing are not to scale. 6. All images used are for illustrative purpose only and do not represent the actual size, features, specifications, fittings and furnishings. 7. The developer reserves the right to make revisions/ alterations, at its absolute discretion, without any liability whatsoever.

2 BEDROOM DUPLEX APARTMENT

TYPE A (with maid room and study room + balcony) VARIANT 1

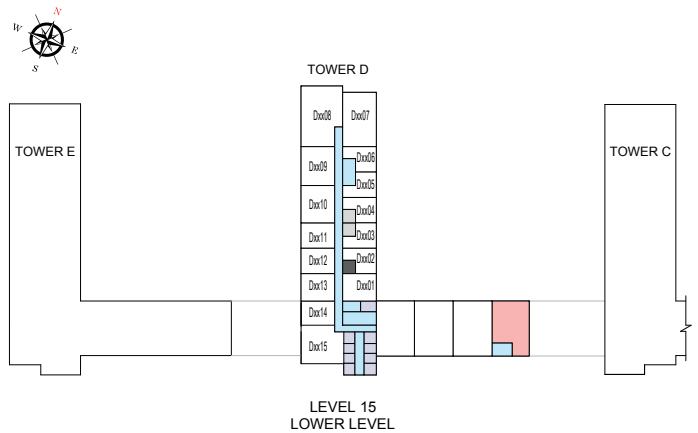
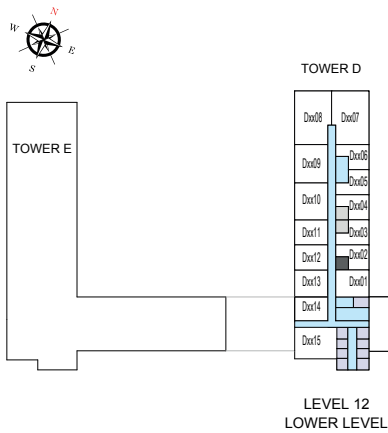
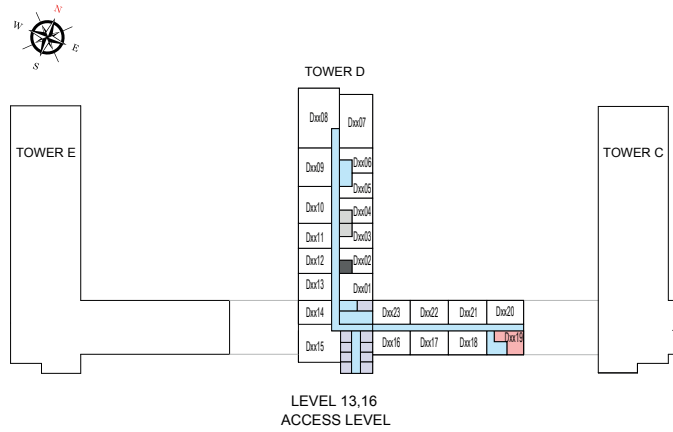
TOTAL SALEABLE AREA

SUITE = 1,705.33 SQ.FT.

BALCONY = 185.46 SQ.FT.

TOTAL = 1,890.79 SQ.FT.

 UNIT



List of unit numbers with this unit plan:

VIEWS

Ras Al Khor, Golf Course, Creek, Amenities
D1319, D1619

Disclaimer: 1. All dimensions are in metric, measured to wall finishes. 2. All materials, dimensions & drawings are approximate. 3. Information is subject to change without notice, at developer's absolute discretion. 4. Actual area may vary from the stated area. 5. Drawing are not to scale. 6. All images used are for illustrative purpose only and do not represent the actual size, features, specifications, fittings and furnishings. 7. The developer reserves the right to make revisions/ alterations, at its absolute discretion, without any liability whatsoever.

3 BEDROOM DUPLEX APARTMENT

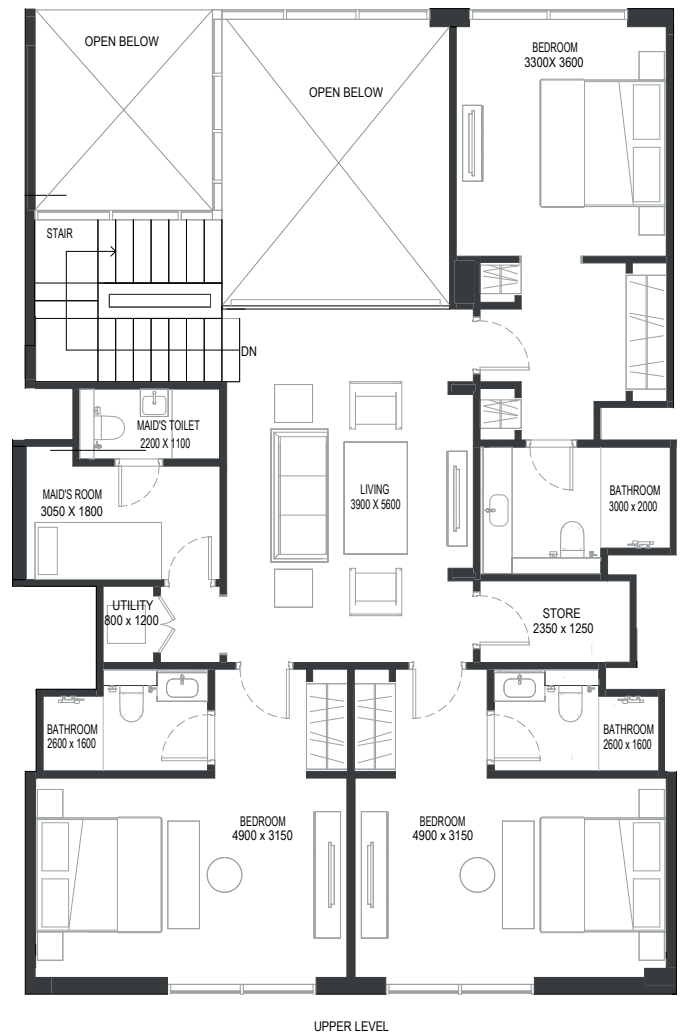
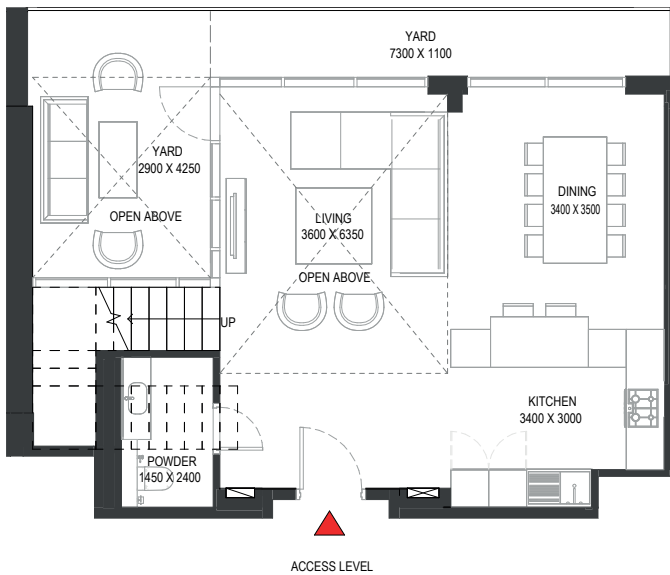
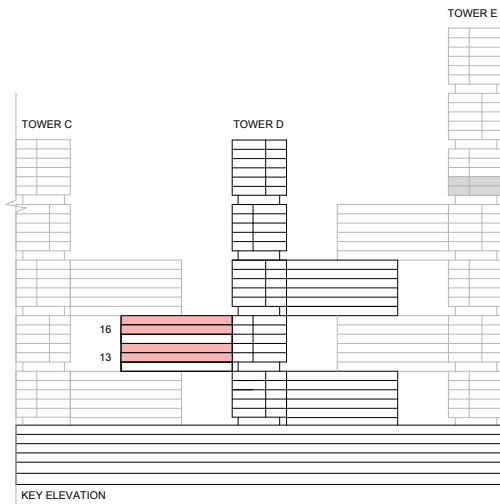
TYPE A (with study room, maid room and powder room + yard)

TOTAL SALEABLE AREA

SUITE = 2,051.92 SQ.FT.

YARD = 231.64 SQ.FT.

TOTAL = 2,283.56 SQ.FT.



List of unit numbers with this unit plan:

VIEWS

Ras Al Khor, Golf Course, Creek, Amenities
D1321, D1621

Golf Course, Creek, Amenities
D1323, D1623

Disclaimer: 1. All dimensions are in metric, measured to wall finishes. 2. All materials, dimensions & drawings are approximate. 3. Information is subject to change without notice, at developer's absolute discretion. 4. Actual area may vary from the stated area. 5. Drawing are not to scale. 6. All images used are for illustrative purpose only and do not represent the actual size, features, specifications, fittings and furnishings. 7. The developer reserves the right to make revisions/ alterations, at its absolute discretion, without any liability whatsoever.

3 BEDROOM DUPLEX APARTMENT

TYPE A (with study room, maid room and powder room + yard)

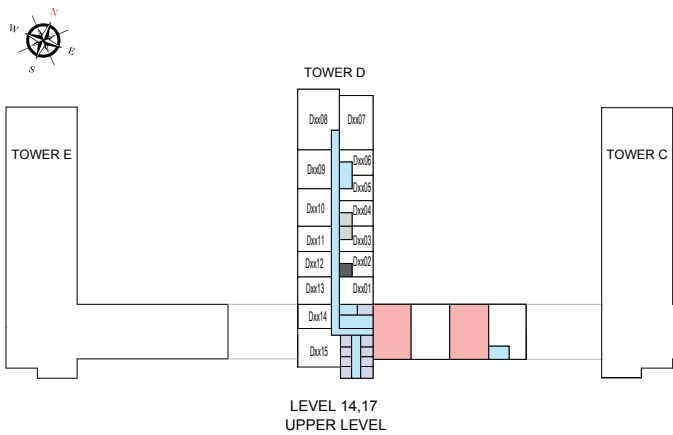
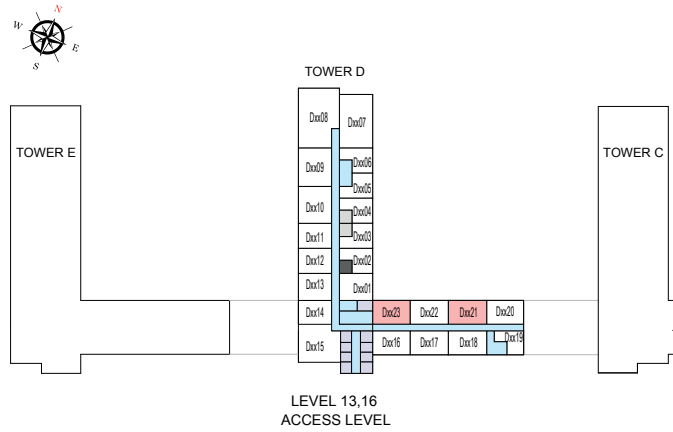
TOTAL SALEABLE AREA

SUITE = 2,051.92 SQ.FT.

YARD = 231.64 SQ.FT.

TOTAL = 2,283.56 SQ.FT.

UNIT



List of unit numbers with this unit plan:

VIEWS

Ras Al Khor, Golf Course, Creek, Amenities

D1321, D1621

Golf Course, Creek, Amenities

D1323, D1623

Disclaimer: 1. All dimensions are in metric, measured to wall finishes. 2. All materials, dimensions & drawings are approximate. 3. Information is subject to change without notice, at developer's absolute discretion. 4. Actual area may vary from the stated area. 5. Drawing are not to scale. 6. All images used are for illustrative purpose only and do not represent the actual size, features, specifications, fittings and furnishings. 7. The developer reserves the right to make revisions/ alterations, at its absolute discretion, without any liability whatsoever.

3 BEDROOM DUPLEX APARTMENT

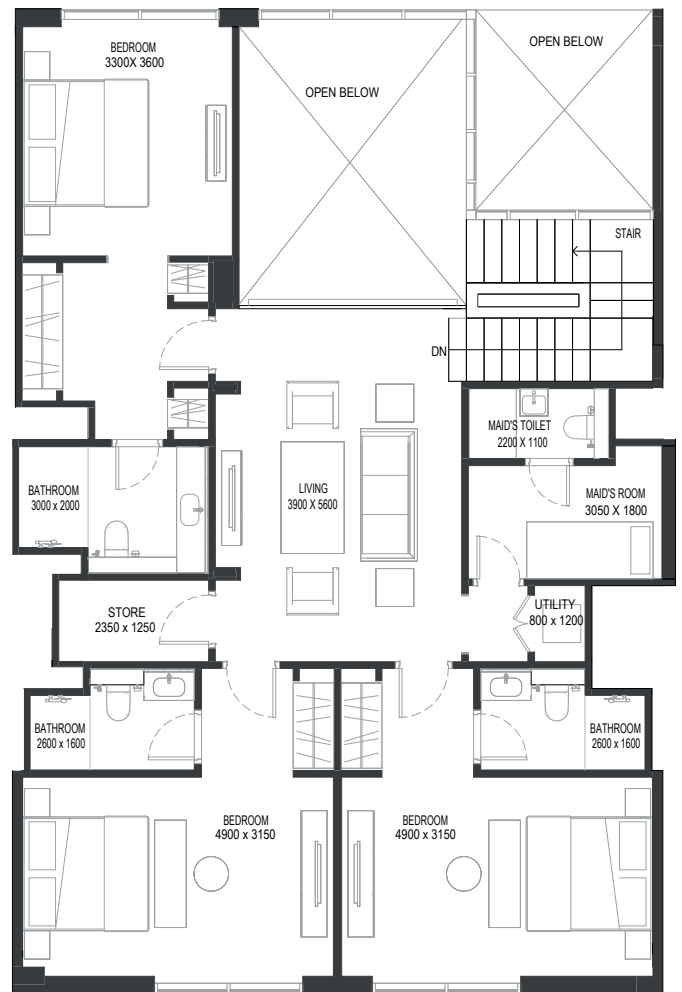
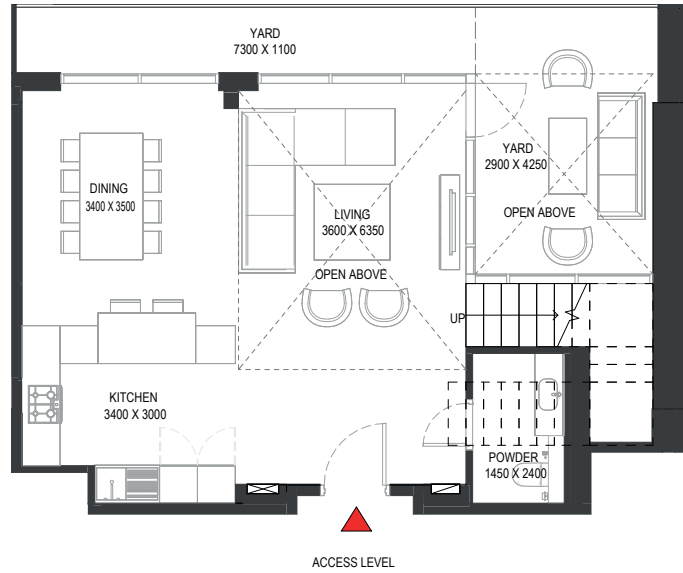
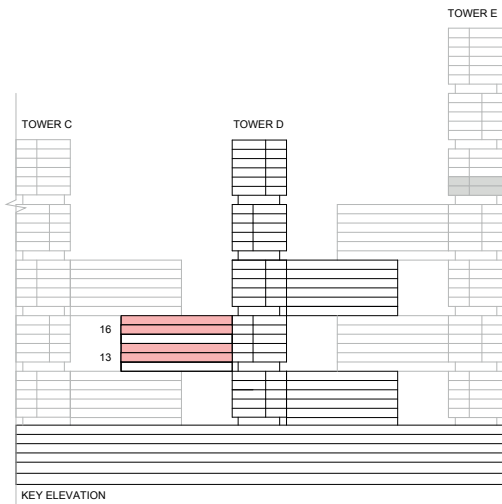
TYPE A (with study room, maid room and powder room + yard) VARIANT 2

TOTAL SALEABLE AREA

SUITE = 2,051.92 SQ.FT.

YARD = 231.64 SQ.FT.

TOTAL = 2,283.56 SQ.FT.



List of unit numbers with this unit plan:

VIEWS

Golf Course, Creek, Amenities
D1322, D1622

Disclaimer: 1. All dimensions are in metric, measured to wall finishes. 2. All materials, dimensions & drawings are approximate. 3. Information is subject to change without notice, at developer's absolute discretion. 4. Actual area may vary from the stated area. 5. Drawing are not to scale. 6. All images used are for illustrative purpose only and do not represent the actual size, features, specifications, fittings and furnishings. 7. The developer reserves the right to make revisions/ alterations, at its absolute discretion, without any liability whatsoever.

3 BEDROOM DUPLEX APARTMENT

TYPE A (with study room, maid room and powder room + yard) VARIANT 2

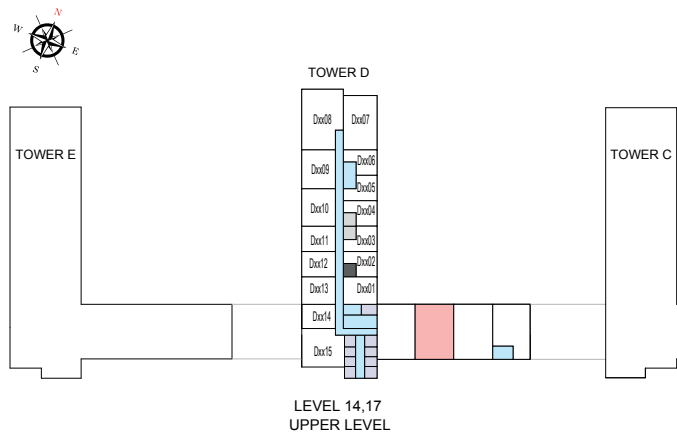
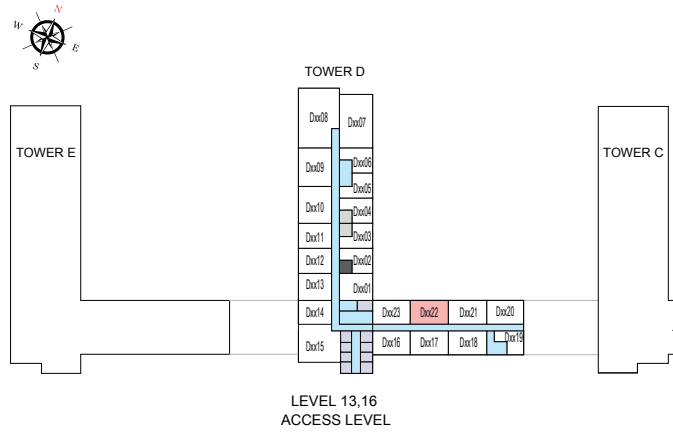
TOTAL SALEABLE AREA

SUITE = 2,051.92 SQ.FT.

YARD = 231.64 SQ.FT.

TOTAL = 2,283.56 SQ.FT.

UNIT



List of unit numbers with this unit plan:

VIEWS

Golf Course, Creek, Amenities

D1322, D1622

Disclaimer: 1. All dimensions are in metric, measured to wall finishes. 2. All materials, dimensions & drawings are approximate. 3. Information is subject to change without notice, at developer's absolute discretion. 4. Actual area may vary from the stated area. 5. Drawing are not to scale. 6. All images used are for illustrative purpose only and do not represent the actual size, features, specifications, fittings and furnishings. 7. The developer reserves the right to make revisions/ alterations, at its absolute discretion, without any liability whatsoever.

3 BEDROOM DUPLEX APARTMENT

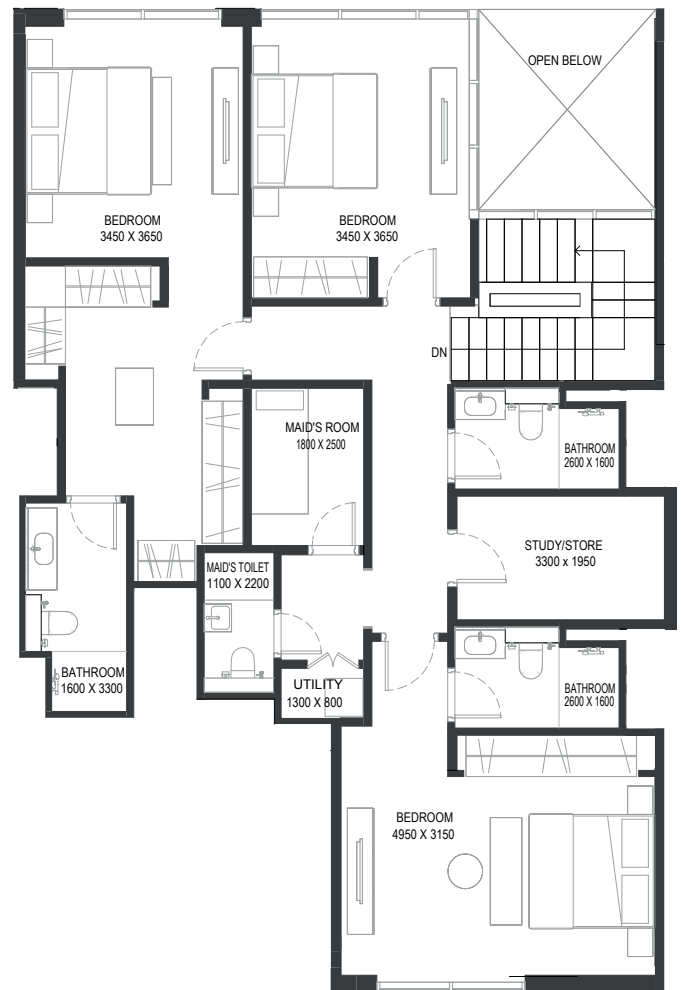
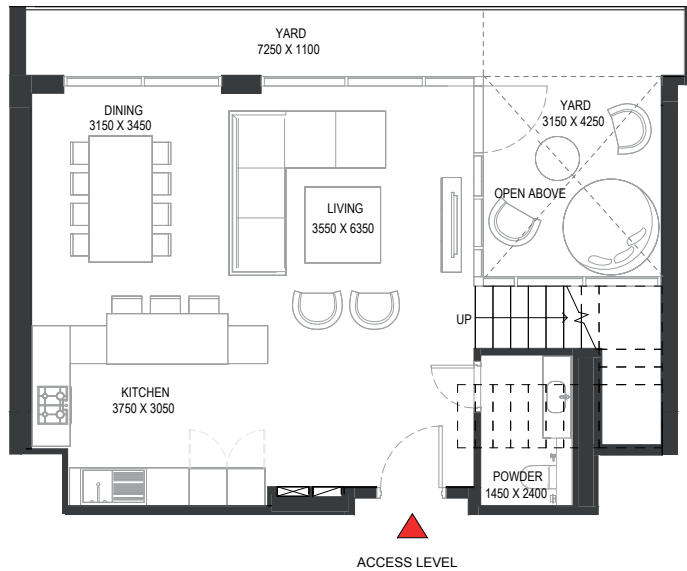
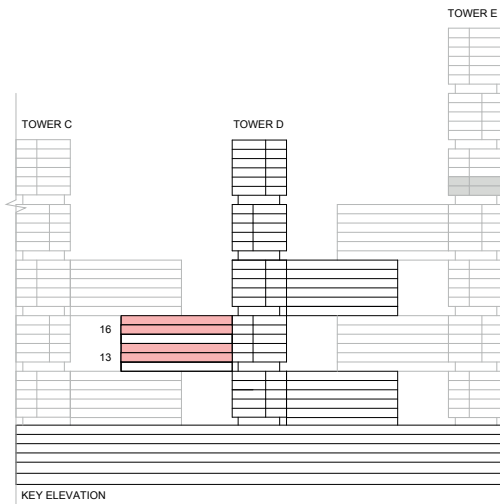
TYPE B (with study room, maid room and powder room + yard) VARIANT 1

TOTAL SALEABLE AREA

SUITE = 2,006.82 SQ.FT.

YARD = 233.58 SQ.FT.

TOTAL = 2,240.40 SQ.FT.



UPPER LEVEL

List of unit numbers with this unit plan:

VIEWS

Ras Al Khor, Golf Course, Creek, Amenities
D1320, D1620

Disclaimer: 1. All dimensions are in metric, measured to wall finishes. 2. All materials, dimensions & drawings are approximate. 3. Information is subject to change without notice, at developer's absolute discretion. 4. Actual area may vary from the stated area. 5. Drawing are not to scale. 6. All images used are for illustrative purpose only and do not represent the actual size, features, specifications, fittings and furnishings. 7. The developer reserves the right to make revisions/ alterations, at its absolute discretion, without any liability whatsoever.

3 BEDROOM DUPLEX APARTMENT

TYPE B (with study room, maid room and powder room + yard) VARIANT 1

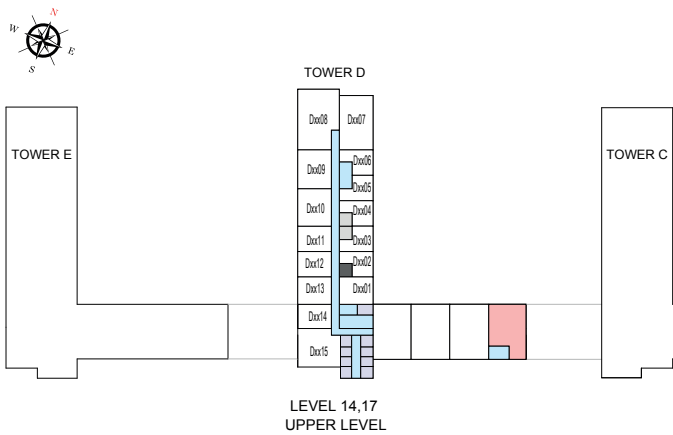
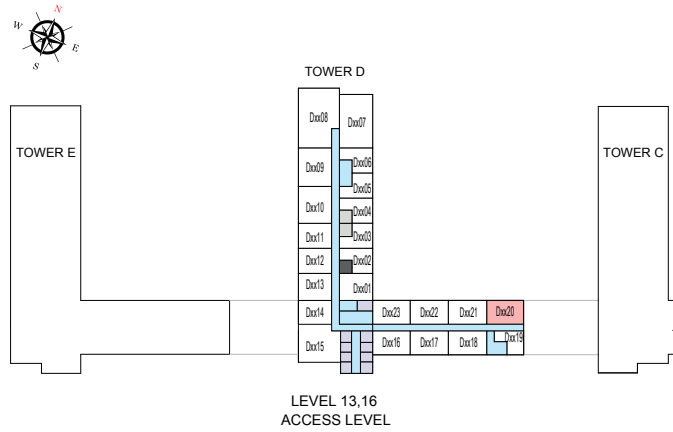
TOTAL SALEABLE AREA

SUITE = 2,006.82 SQ.FT.

YARD = 233.58 SQ.FT.

TOTAL = 2,240.40 SQ.FT.

UNIT



List of unit numbers with this unit plan:

VIEWS

Ras Al Khor, Golf Course, Creek, Amenities
D1320, D1620

Disclaimer: 1. All dimensions are in metric, measured to wall finishes. 2. All materials, dimensions & drawings are approximate. 3. Information is subject to change without notice, at developer's absolute discretion. 4. Actual area may vary from the stated area. 5. Drawing are not to scale. 6. All images used are for illustrative purpose only and do not represent the actual size, features, specifications, fittings and furnishings. 7. The developer reserves the right to make revisions/ alterations, at its absolute discretion, without any liability whatsoever.

4 BEDROOM DUPLEX APARTMENT

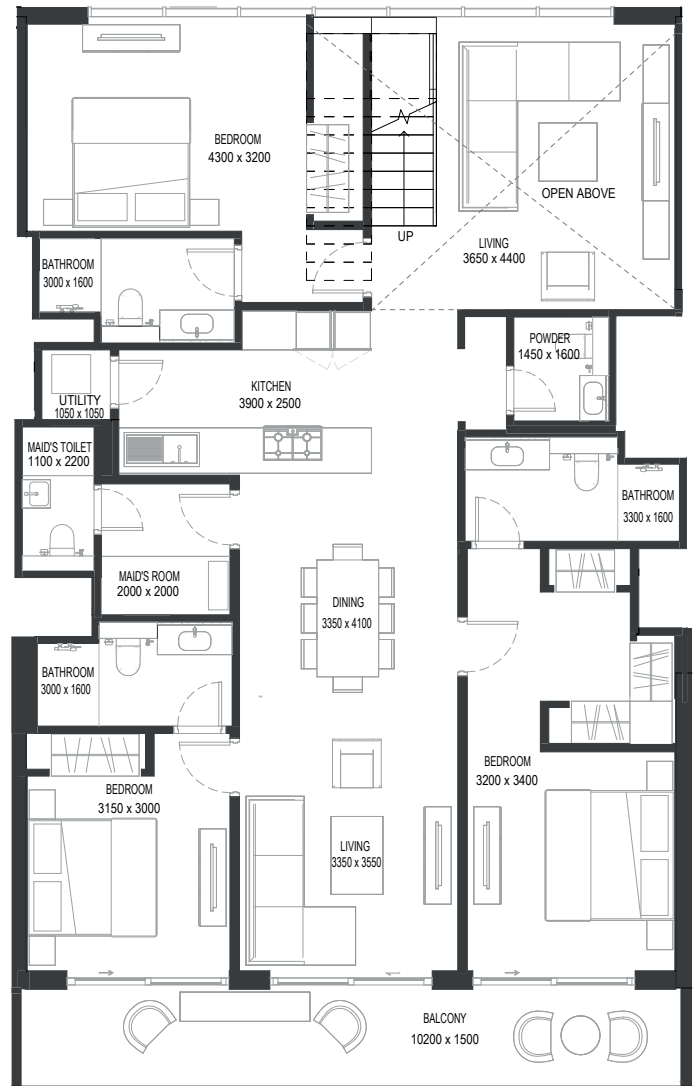
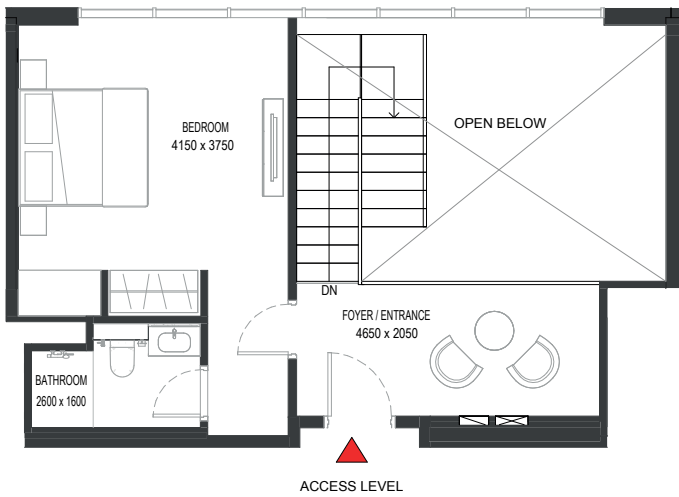
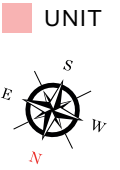
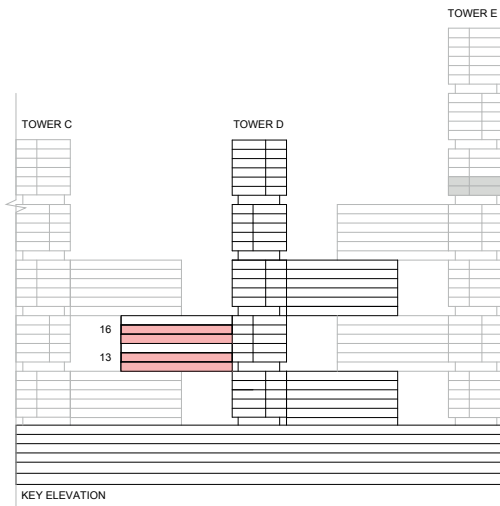
TYPE A (with maid room and powder room + balcony)

TOTAL SALEABLE AREA

SUITE = 2,197.78 SQ.FT.

BALCONY = 182.34 SQ.FT.

TOTAL = 2,380.12 SQ.FT.



List of unit numbers with this unit plan:

VIEWS

Ras Al Khor, Golf Course, Creek, Amenities
D1318, D1618

Golf Course, Creek, Amenities
D1316, D1616

Disclaimer: 1. All dimensions are in metric, measured to wall finishes. 2. All materials, dimensions & drawings are approximate. 3. Information is subject to change without notice, at developer's absolute discretion. 4. Actual area may vary from the stated area. 5. Drawing are not to scale. 6. All images used are for illustrative purpose only and do not represent the actual size, features, specifications, fittings and furnishings. 7. The developer reserves the right to make revisions/ alterations, at its absolute discretion, without any liability whatsoever.

4 BEDROOM DUPLEX APARTMENT
TYPE A (with maid room and powder room + balcony)

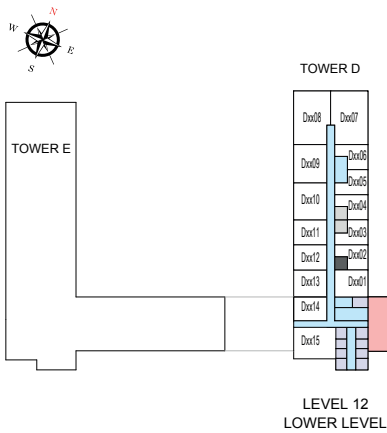
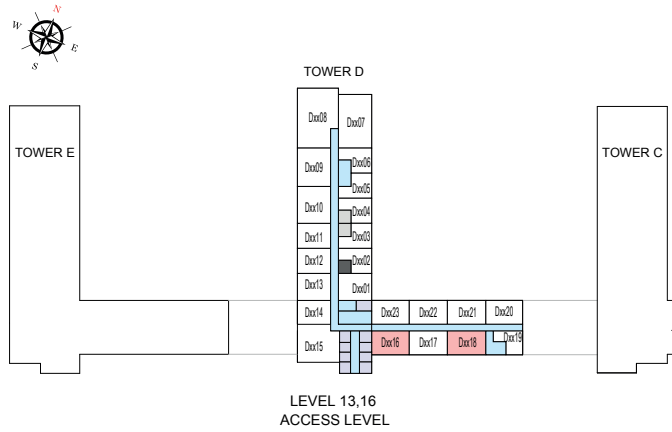
TOTAL SALEABLE AREA

SUITE = 2,197.78 SQ.FT.

BALCONY = 182.34 SQ.FT.

TOTAL = 2,380.12 SQ.FT.

UNIT



List of unit numbers with this unit plan:

VIEWS

Ras Al Khor, Golf Course, Creek, Amenities
 D1318, D1618

Golf Course, Creek, Amenities
 D1316, D1616

Disclaimer: 1. All dimensions are in metric, measured to wall finishes. 2. All materials, dimensions & drawings are approximate. 3. Information is subject to change without notice, at developer's absolute discretion. 4. Actual area may vary from the stated area. 5. Drawing are not to scale. 6. All images used are for illustrative purpose only and do not represent the actual size, features, specifications, fittings and furnishings. 7. The developer reserves the right to make revisions/ alterations, at its absolute discretion, without any liability whatsoever.

4 BEDROOM DUPLEX APARTMENT

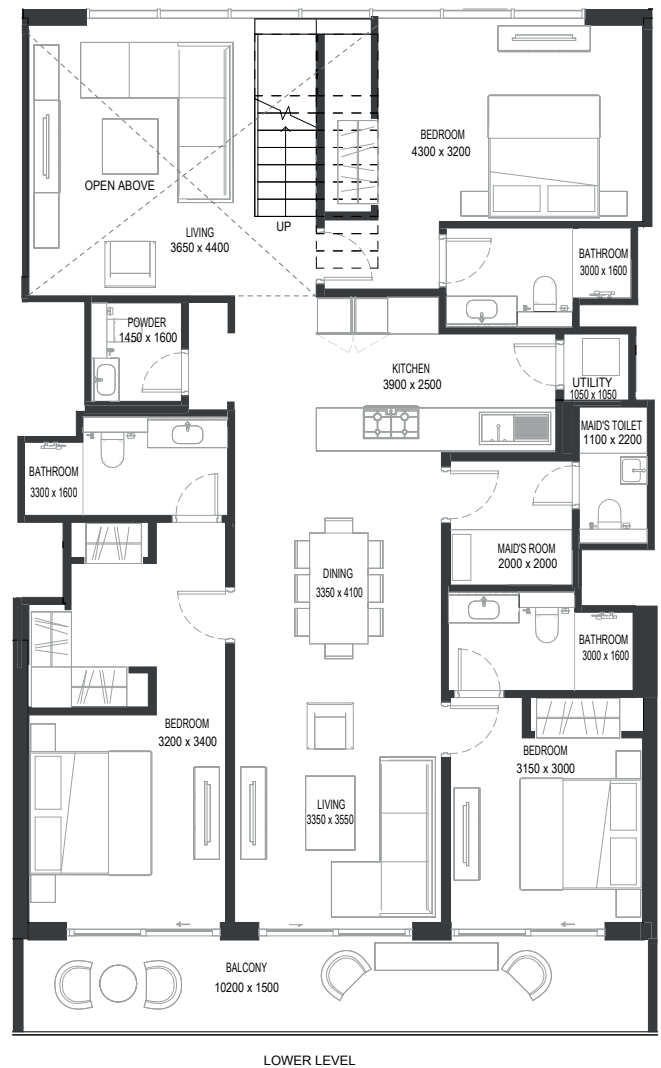
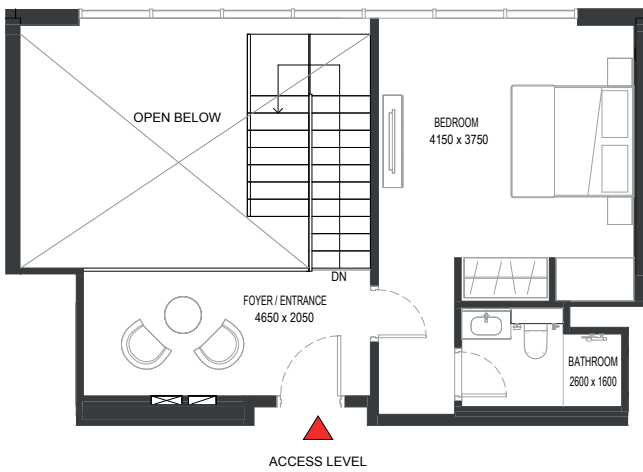
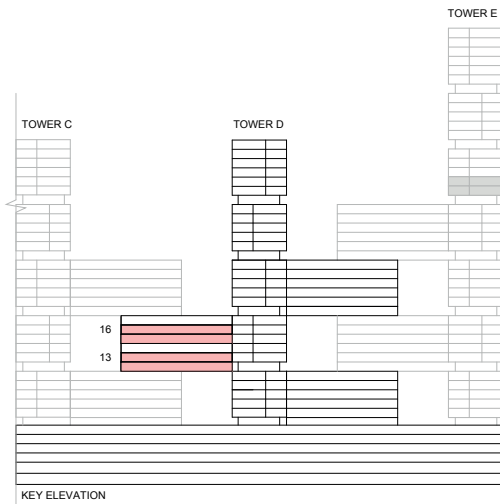
TYPE A (with maid room and powder room + balcony) VARIANT 2

TOTAL SALEABLE AREA

SUITE = 2,177.75 SQ.FT.

BALCONY = 182.34 SQ.FT.

TOTAL = 2,360.09 SQ.FT.



List of unit numbers with this unit plan:

VIEWS

Golf Course, Creek, Amenities
D1317, D1617

Disclaimer: 1. All dimensions are in metric, measured to wall finishes. 2. All materials, dimensions & drawings are approximate. 3. Information is subject to change without notice, at developer's absolute discretion. 4. Actual area may vary from the stated area. 5. Drawing are not to scale. 6. All images used are for illustrative purpose only and do not represent the actual size, features, specifications, fittings and furnishings. 7. The developer reserves the right to make revisions/ alterations, at its absolute discretion, without any liability whatsoever.

4 BEDROOM DUPLEX APARTMENT

TYPE A (with maid room and powder room + balcony) VARIANT 2

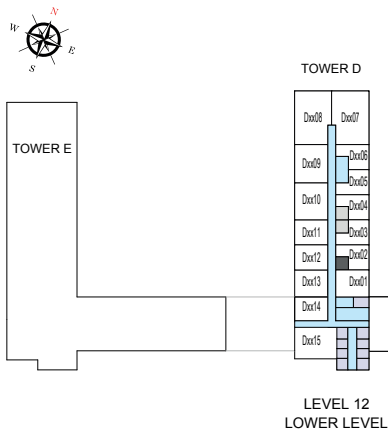
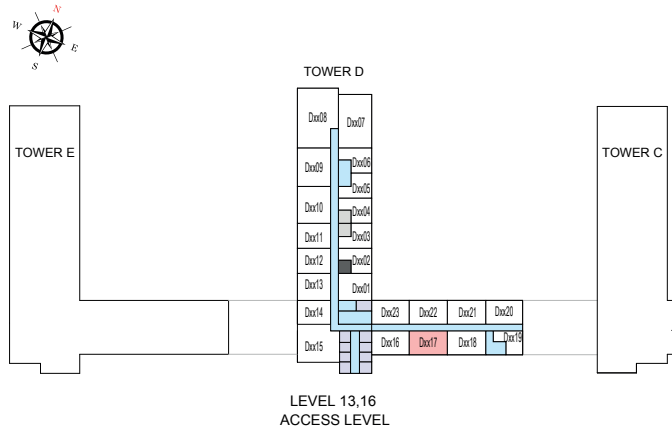
TOTAL SALEABLE AREA

SUITE = 2,177.75 SQ.FT.

BALCONY = 182.34 SQ.FT.

TOTAL = 2,360.09 SQ.FT.

■ UNIT



List of unit numbers with this unit plan:

VIEWS

Golf Course, Creek, Amenities
D1317, D1617

Disclaimer: 1. All dimensions are in metric, measured to wall finishes. 2. All materials, dimensions & drawings are approximate. 3. Information is subject to change without notice, at developer's absolute discretion. 4. Actual area may vary from the stated area. 5. Drawing are not to scale. 6. All images used are for illustrative purpose only and do not represent the actual size, features, specifications, fittings and furnishings. 7. The developer reserves the right to make revisions/ alterations, at its absolute discretion, without any liability whatsoever.



SOBHA ONE

SOBHA
REALTY